



2021 City of Branson Community Survey GIS Maps

Presented to the City of Branson,
Missouri
December 2021

Interpreting the Maps

The maps on the following pages show the mean ratings for several questions on the survey by Census Block Group. If all areas on a map are the same color, then residents generally feel the same about that issue regardless of the location of their home.

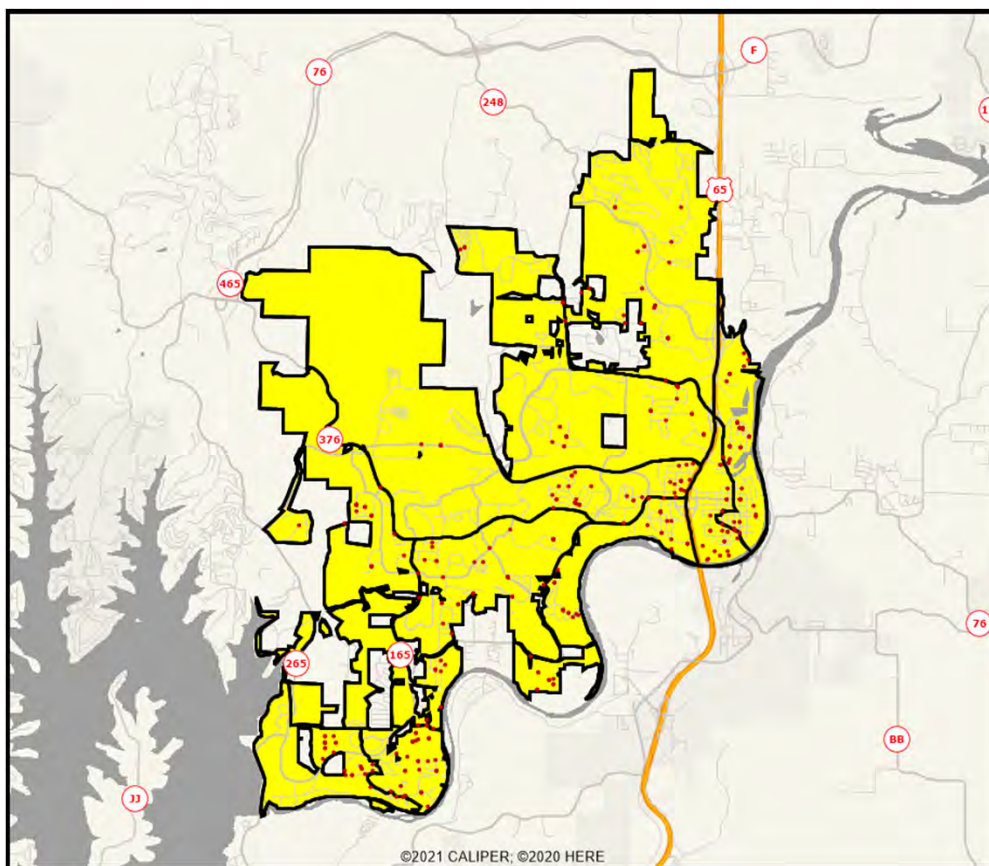
When reading the maps, please use the following color scheme as a guide:

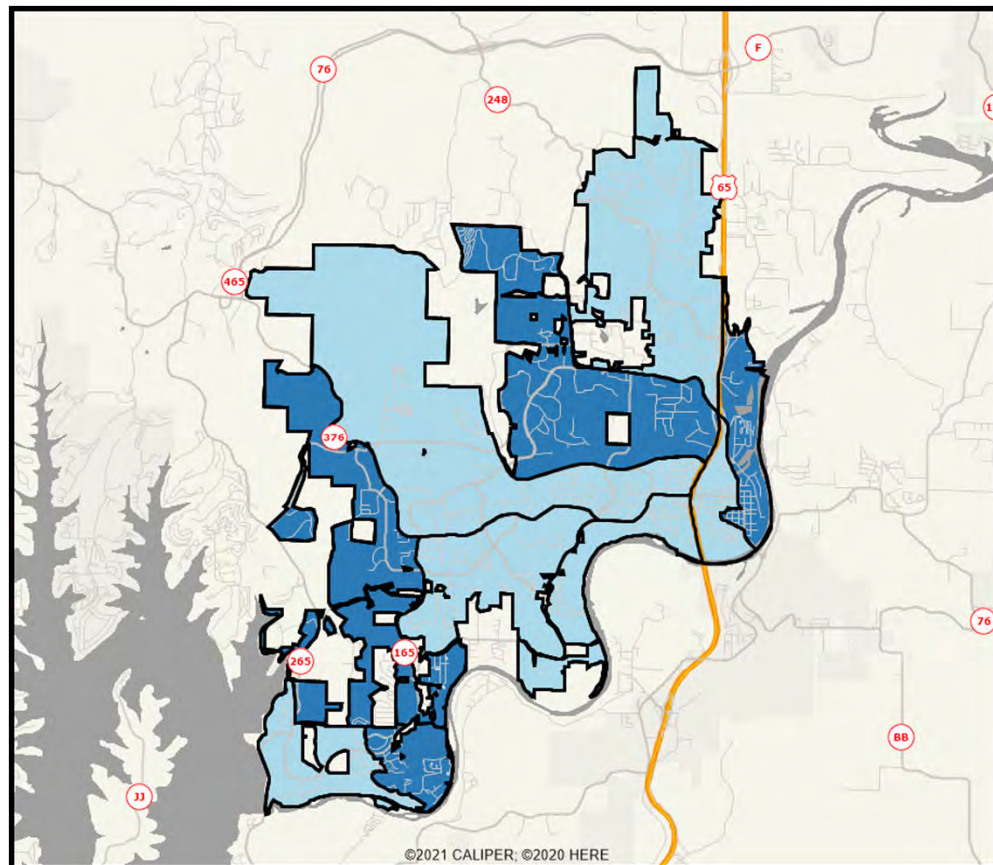
- **DARK/LIGHT BLUE** shades indicate POSITIVE ratings. Shades of blue generally indicate satisfaction with a service, ratings of “excellent” or “good” and ratings of “very safe” or “safe.”
- **OFF-WHITE** shades indicate NEUTRAL ratings. Shades of neutral generally indicate that residents thought the quality of service delivery is adequate.
- **ORANGE/RED** shades indicate NEGATIVE ratings. Shades of orange/red generally indicate dissatisfaction with a service, ratings of “below average” or “poor” and ratings of “unsafe” or “very unsafe.”

Location of Respondents

(Boundaries Show Census Block Groups)

Branson, MO

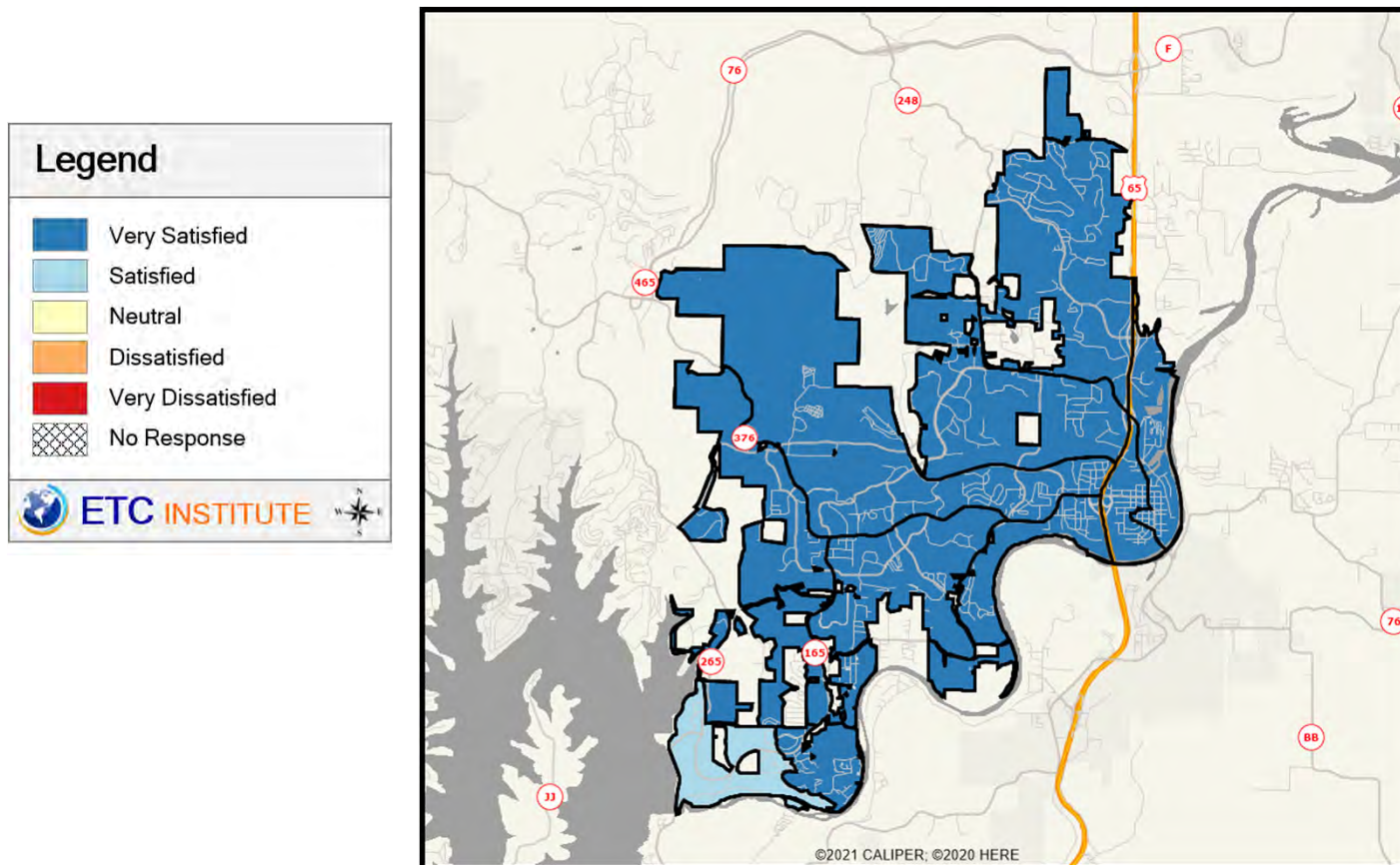




Page 3

Q1-02. Quality of fire service

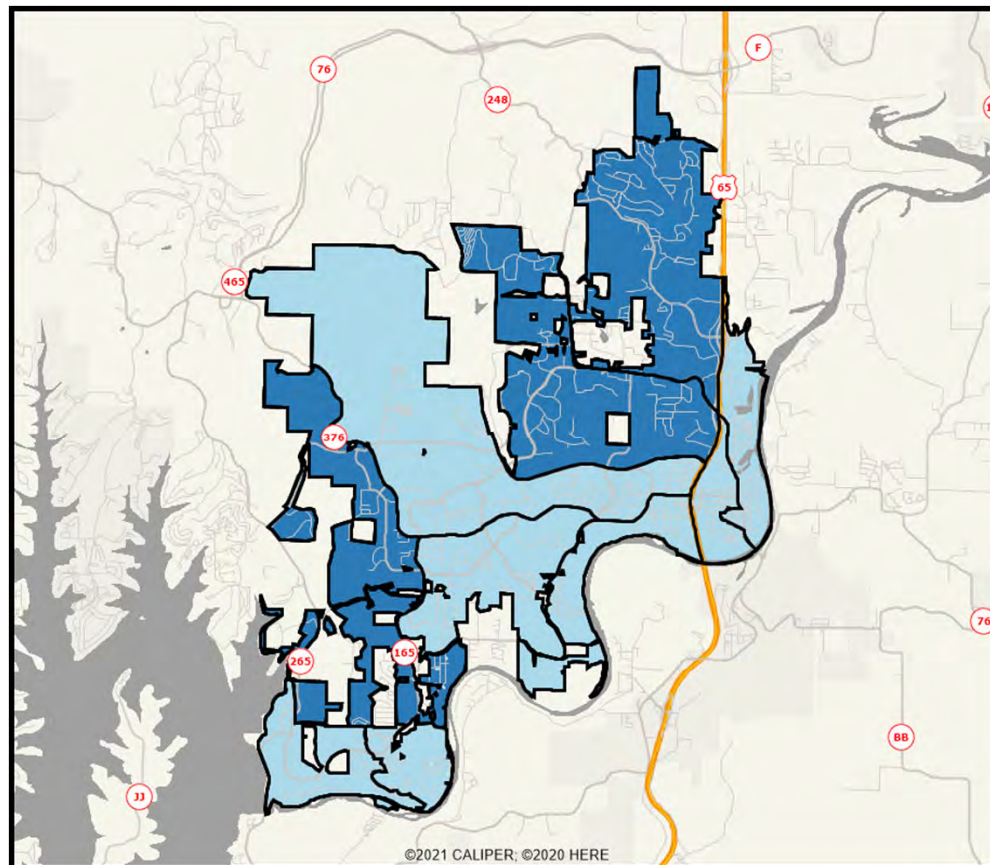
(Shading Reflects the Mean Rating by Census Block Group)



Branson Community Survey

Q1-03. Quality of City parks and recreation facilities

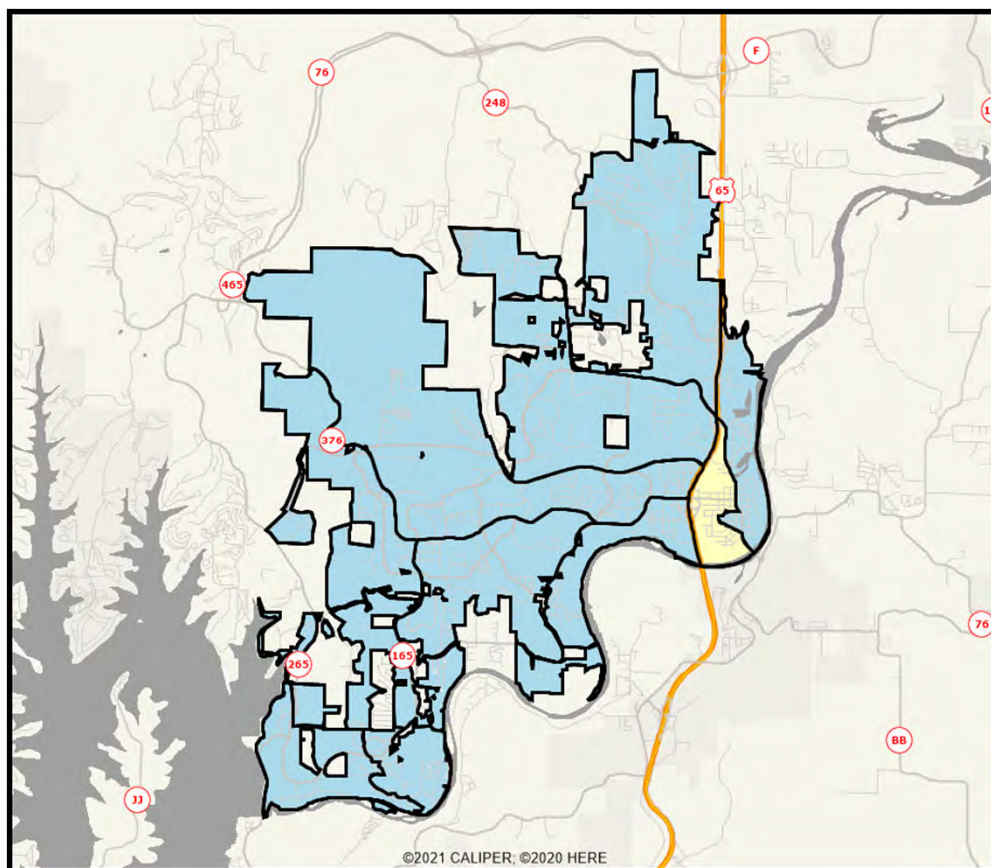
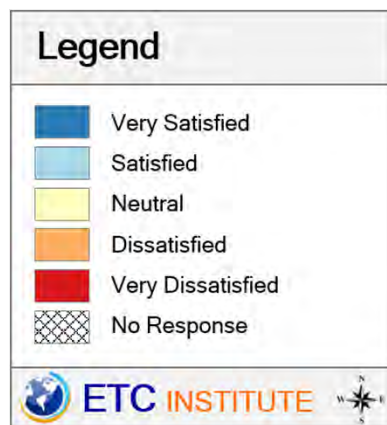
(Shading Reflects the Mean Rating by Census Block Group)



Branson
Community
Survey

Q1-04. Quality of recreational events and programs

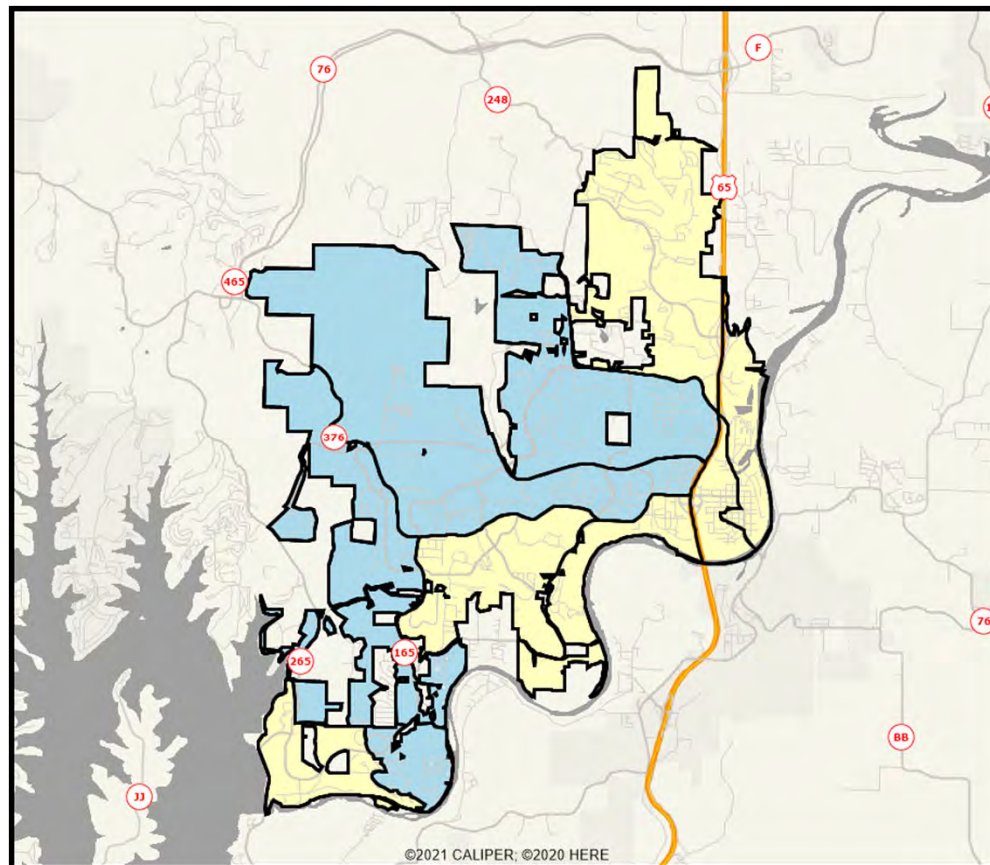
(Shading Reflects the Mean Rating by Census Block Group)



Branson
Community
Survey

Q1-05. Enforcement of City codes and ordinances

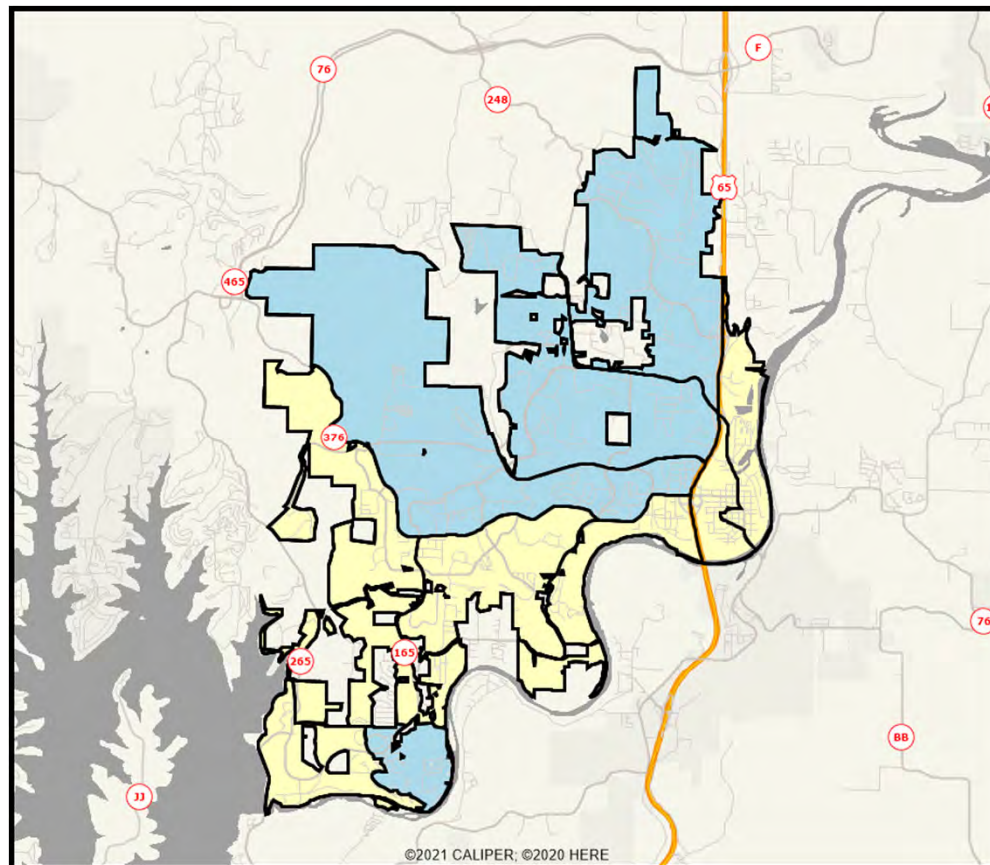
(Shading Reflects the Mean Rating by Census Block Group)



Branson
Community
Survey

Q1-06. Quality of building permit process

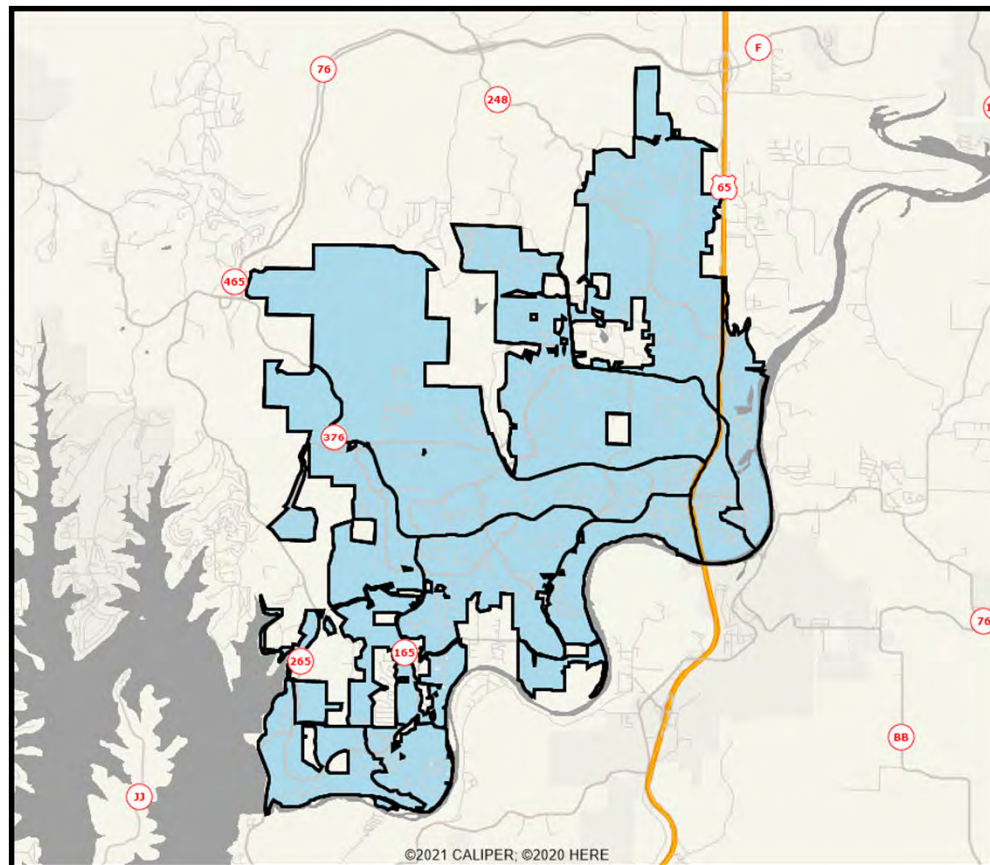
(Shading Reflects the Mean Rating by Census Block Group)



Branson
Community
Survey

Q1-07. Quality of customer service you receive from City employees

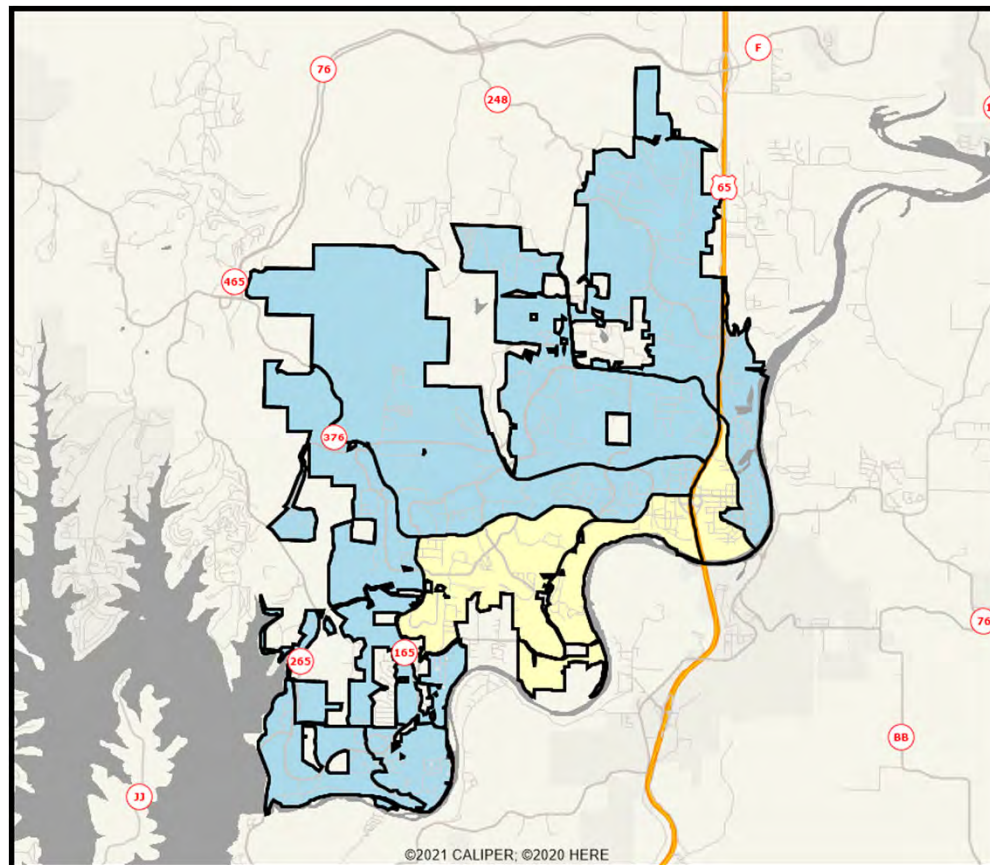
(Shading Reflects the Mean Rating by Census Block Group)



Branson
Community
Survey

Q1-08. Quality and effectiveness of City communication

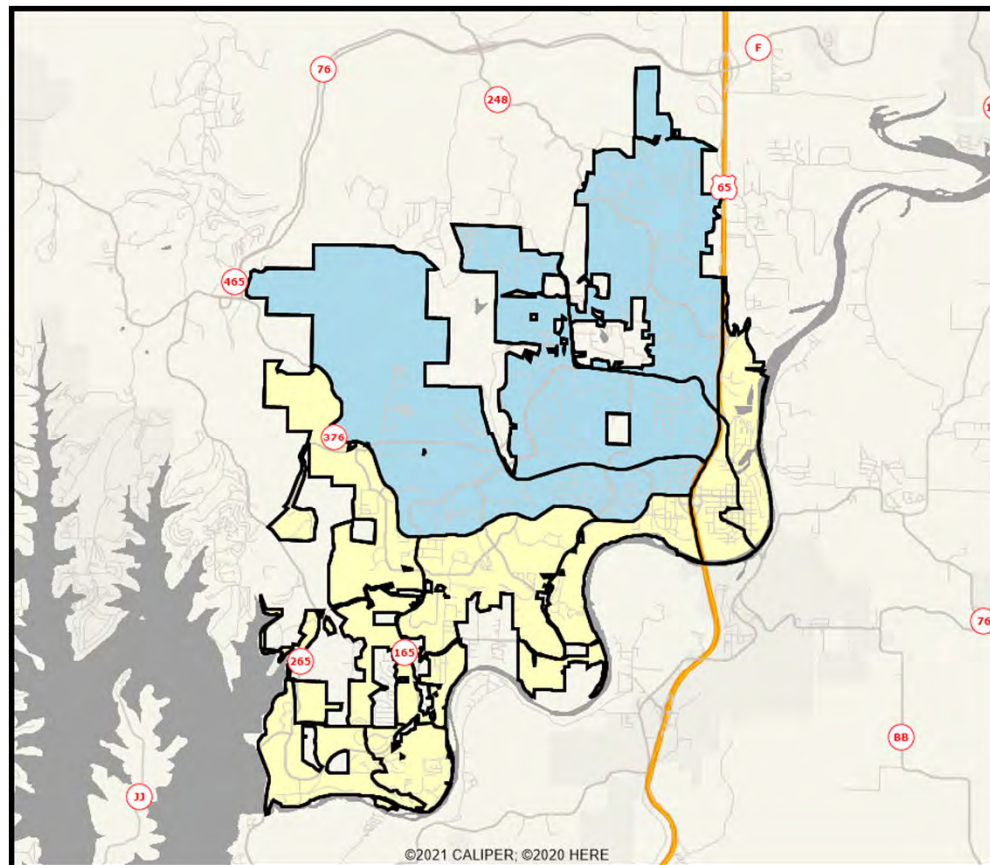
(Shading Reflects the Mean Rating by Census Block Group)



Branson
Community
Survey

Q1-09. Management of traffic flow on City streets

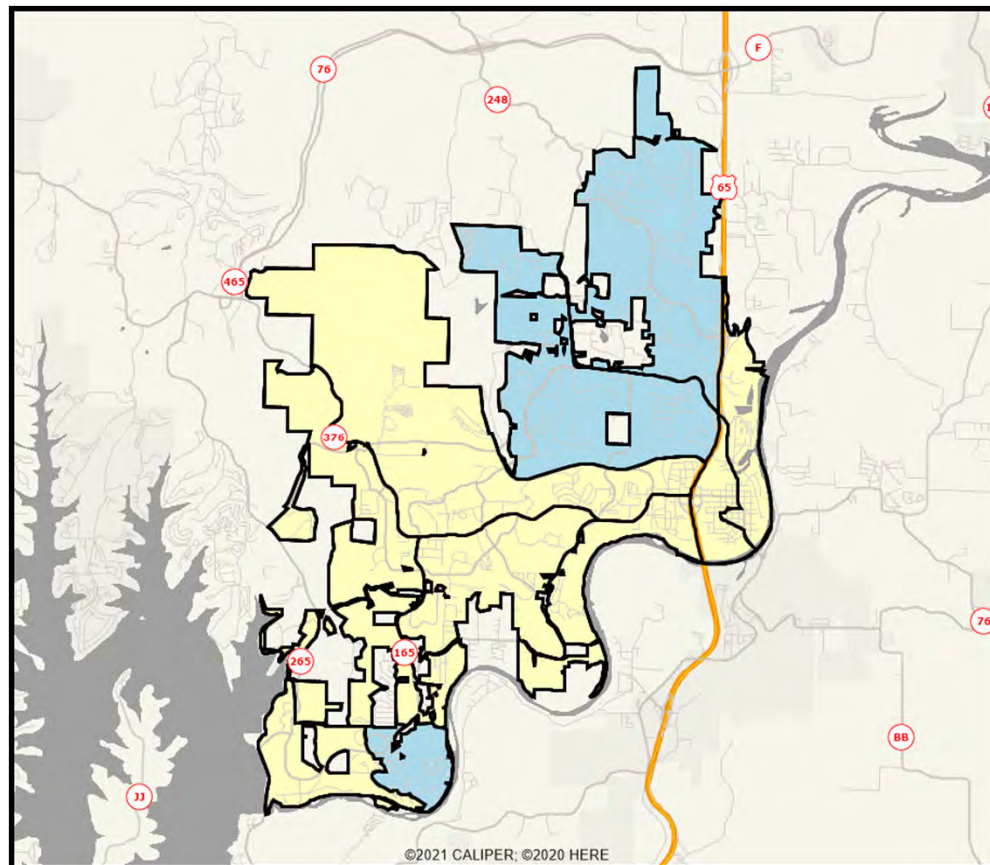
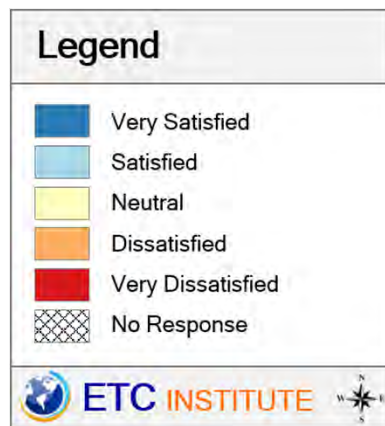
(Shading Reflects the Mean Rating by Census Block Group)



Branson
Community
Survey

Q1-10. Maintenance of City streets and other infrastructure (e.g. water, sewer)

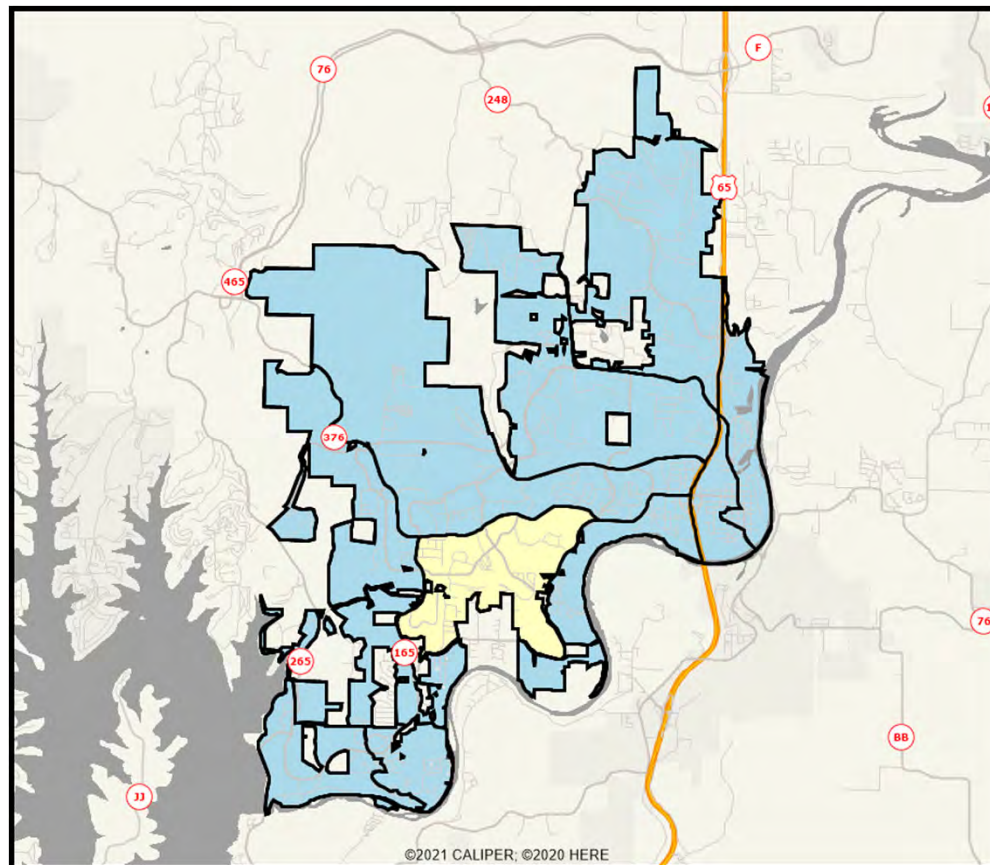
(Shading Reflects the Mean Rating by Census Block Group)



Branson
Community
Survey

Q1-11. City of Branson's water and sewer rates

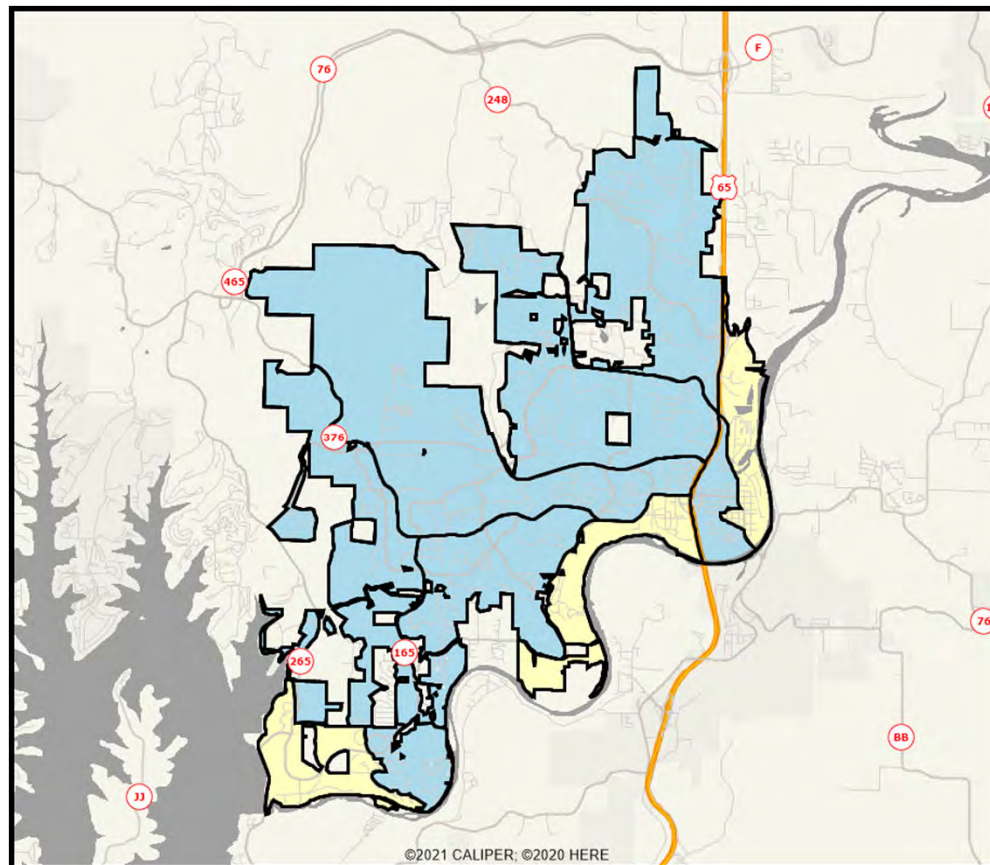
(Shading Reflects the Mean Rating by Census Block Group)



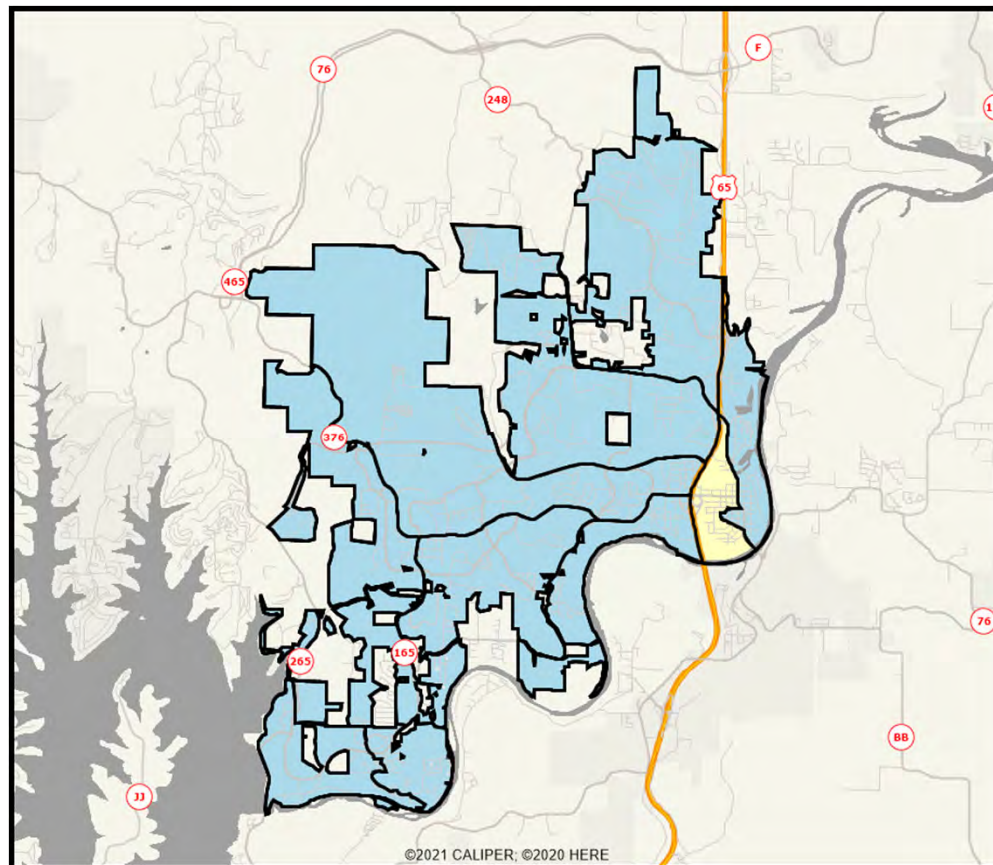
Branson
Community
Survey

Q1-12. Management of stormwater runoff

(Shading Reflects the Mean Rating by Census Block Group)



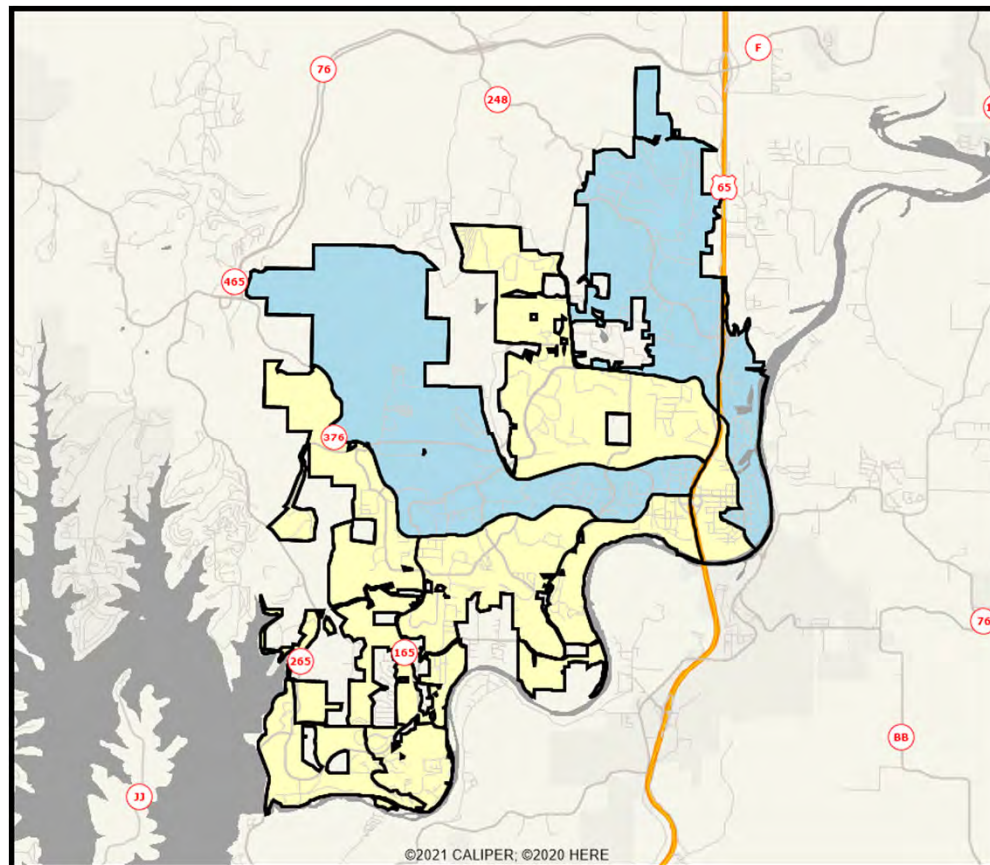
Branson
Community
Survey



Page 16

Q3-03. How well the City manages growth

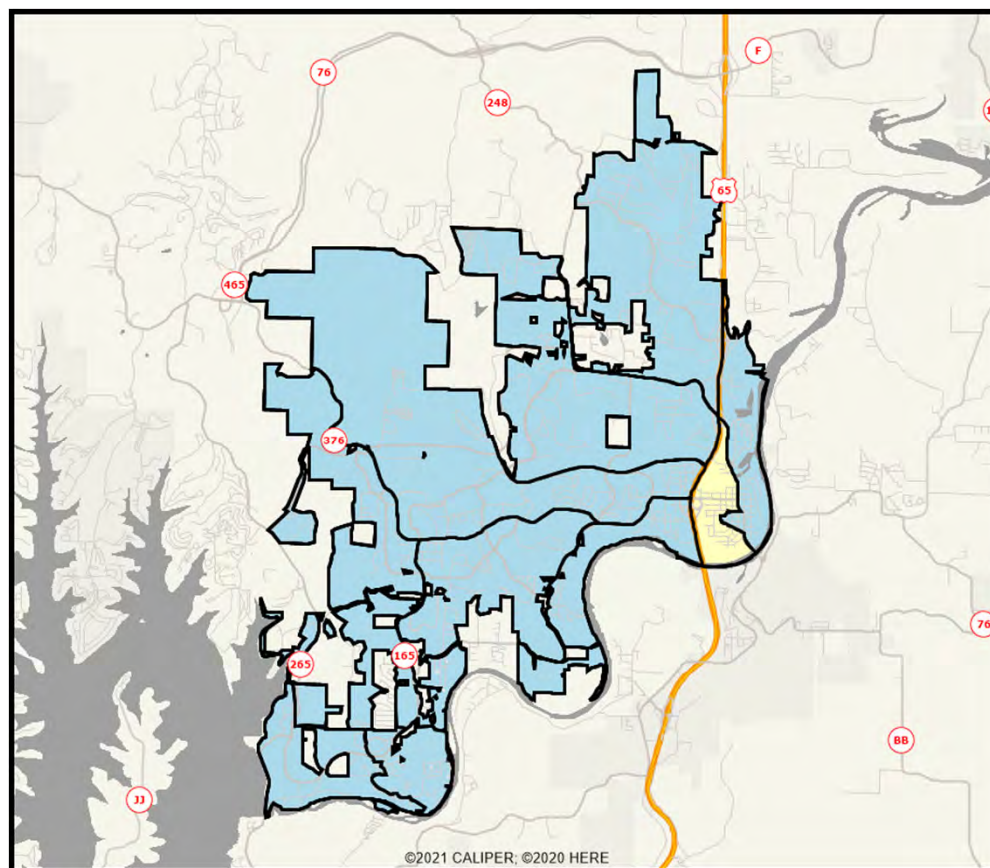
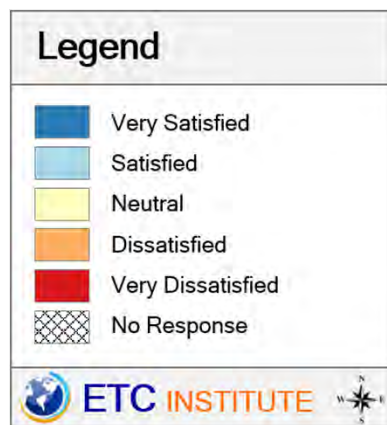
(Shading Reflects the Mean Rating by Census Block Group)



Branson
Community
Survey

Q3-04. Quality of life in the City

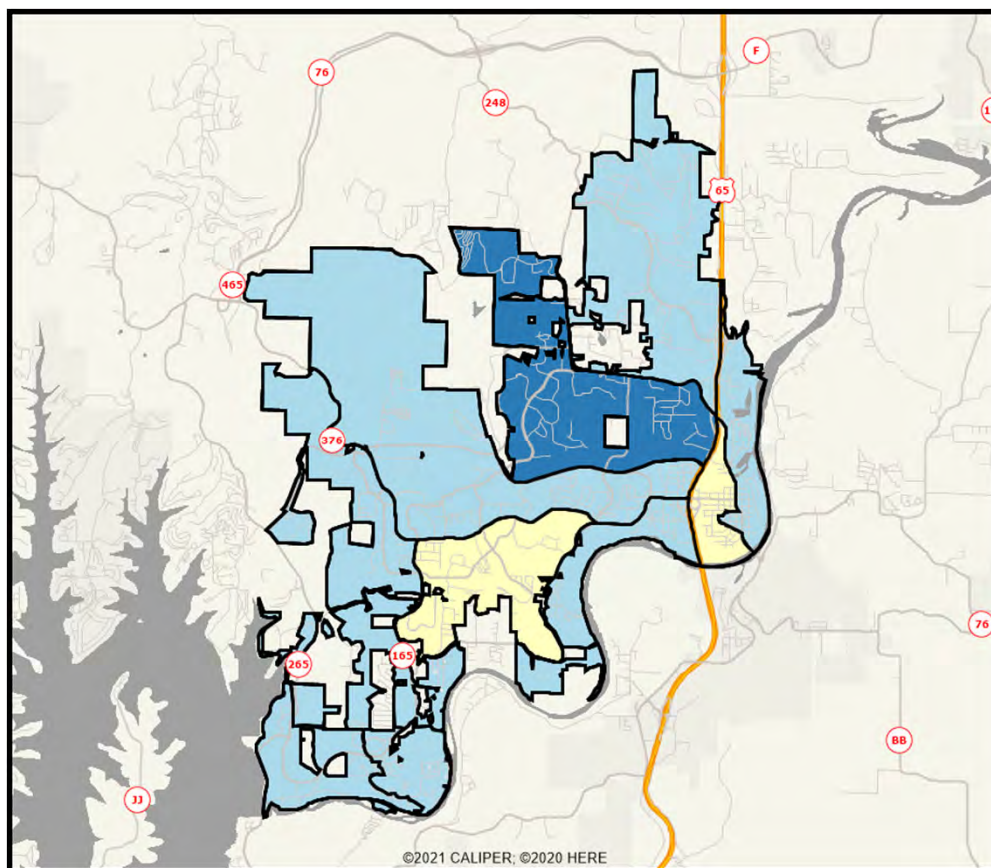
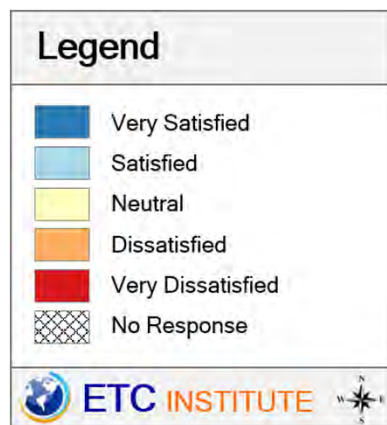
(Shading Reflects the Mean Rating by Census Block Group)



Branson
Community
Survey

Q3-05. Feeling of safety in the City

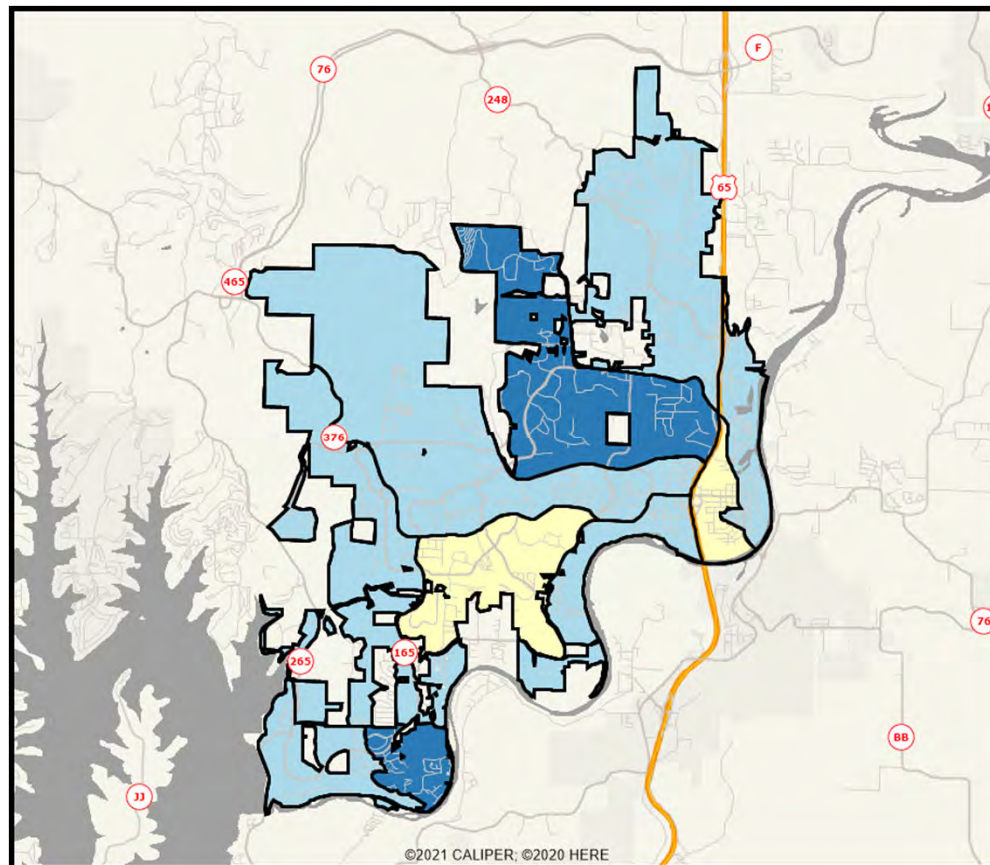
(Shading Reflects the Mean Rating by Census Block Group)



Branson
Community
Survey

Q3-06. Feeling of safety in your neighborhood

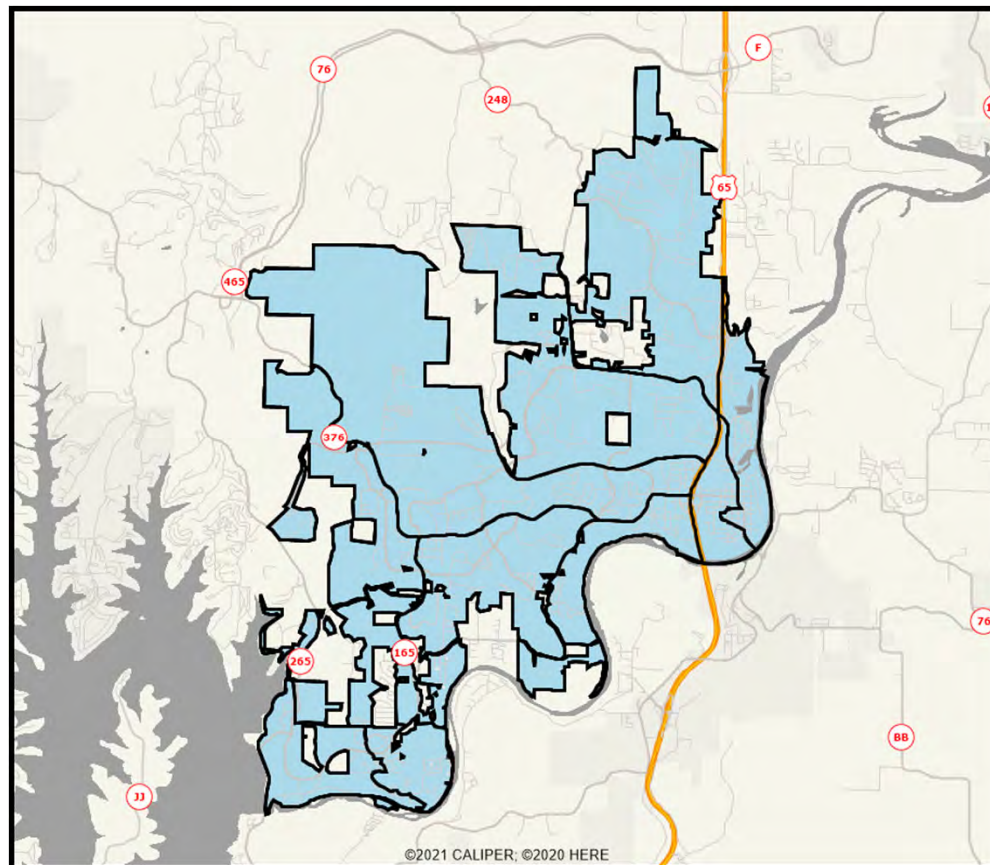
(Shading Reflects the Mean Rating by Census Block Group)



Branson
Community
Survey

Q3-07. Appearance/visual attractiveness of Historic Downtown Branson

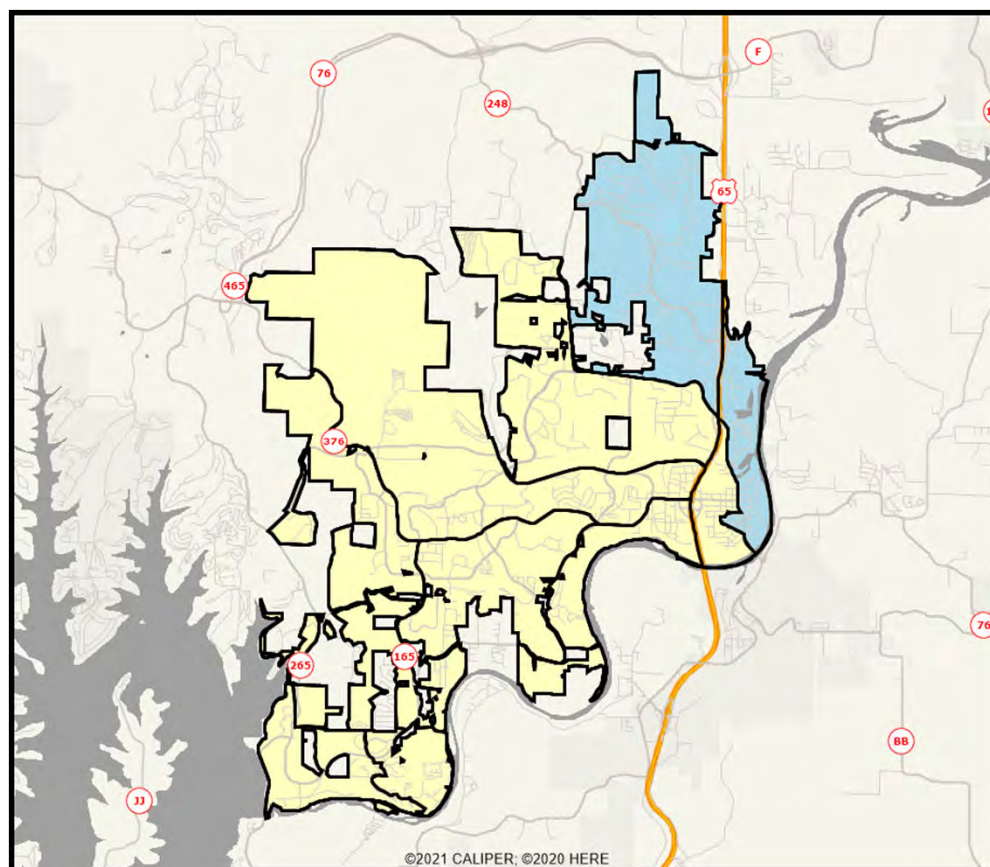
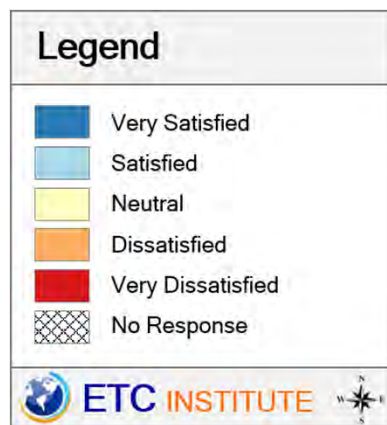
(Shading Reflects the Mean Rating by Census Block Group)



Branson
Community
Survey

Q3-08. Appearance/visual attractiveness of 76 Country Blvd

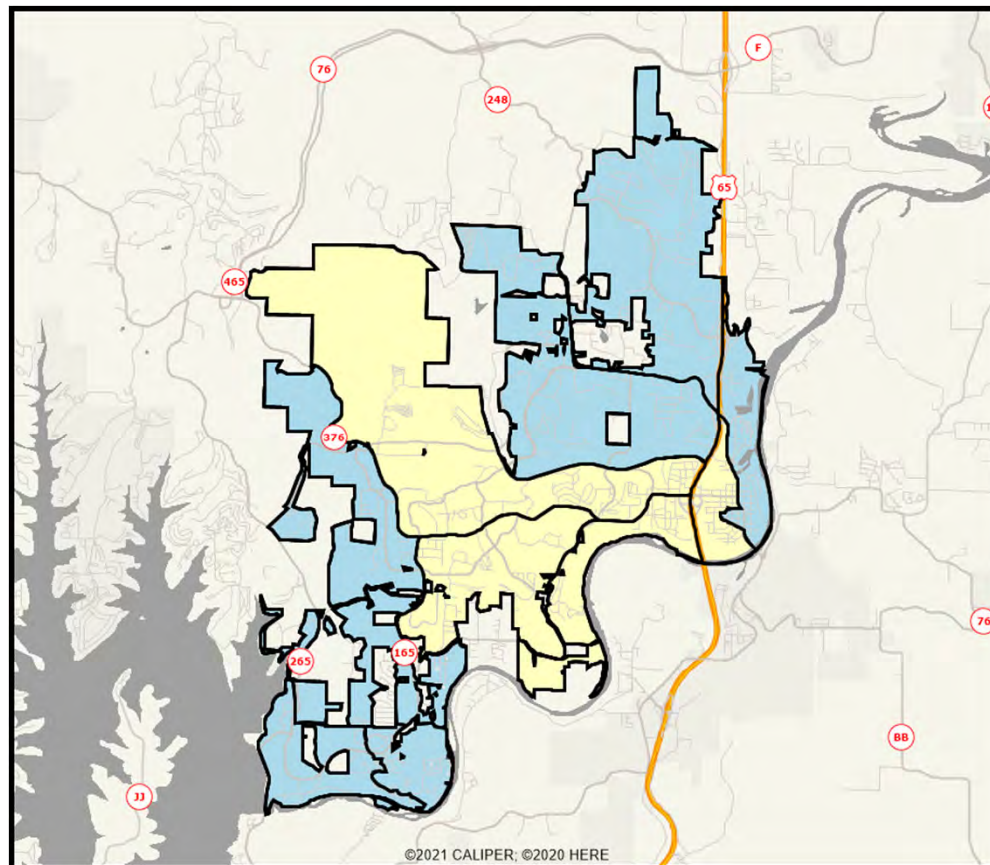
(Shading Reflects the Mean Rating by Census Block Group)



Branson
Community
Survey

Q3-09. Appearance/visual attractiveness of the entire City

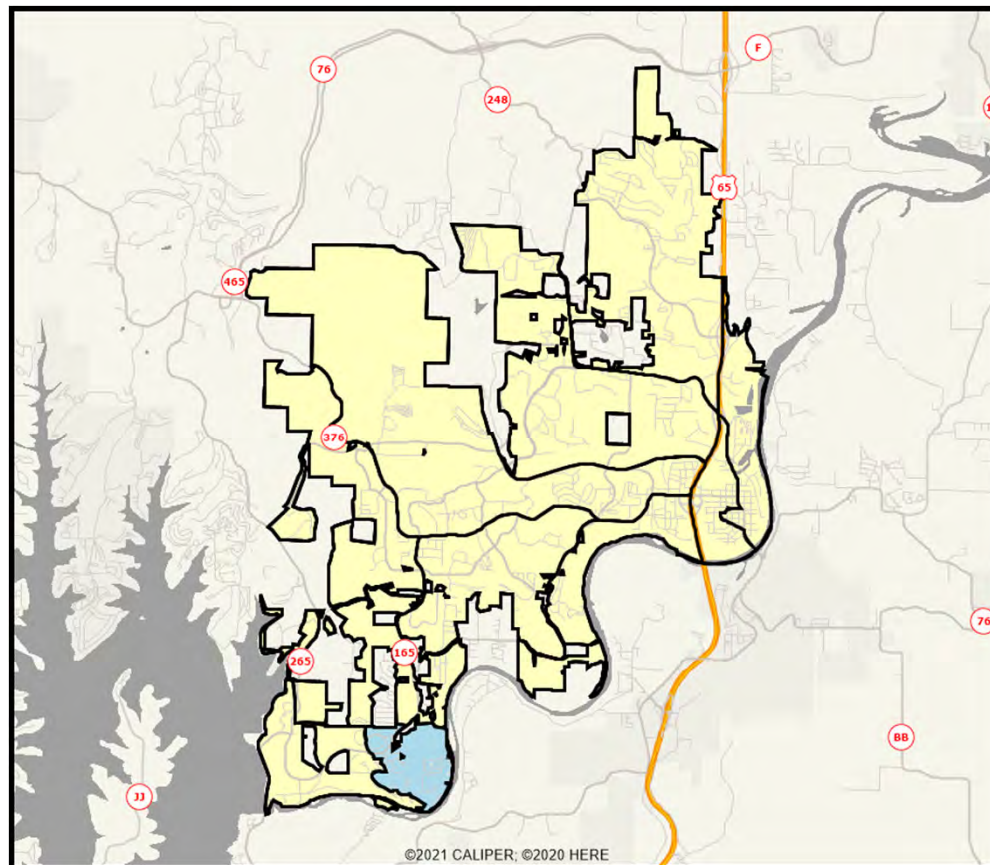
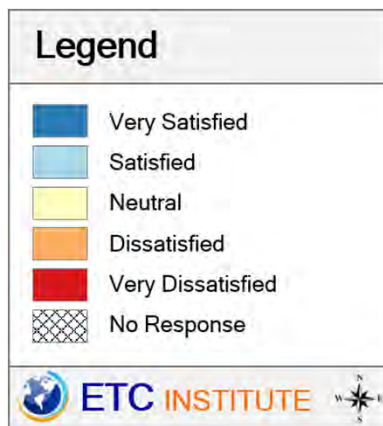
(Shading Reflects the Mean Rating by Census Block Group)



Branson
Community
Survey

Q3-10. Value you receive for your City taxes and fees

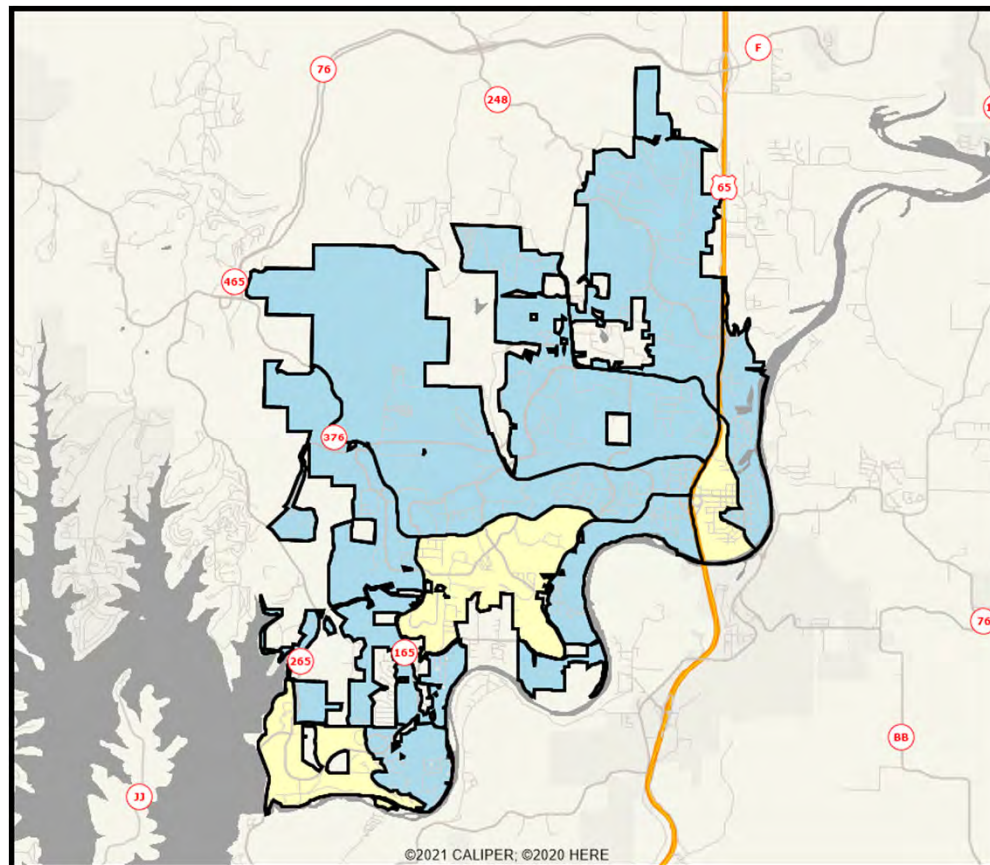
(Shading Reflects the Mean Rating by Census Block Group)



Branson
Community
Survey

Q4-1. City efforts to prevent crime

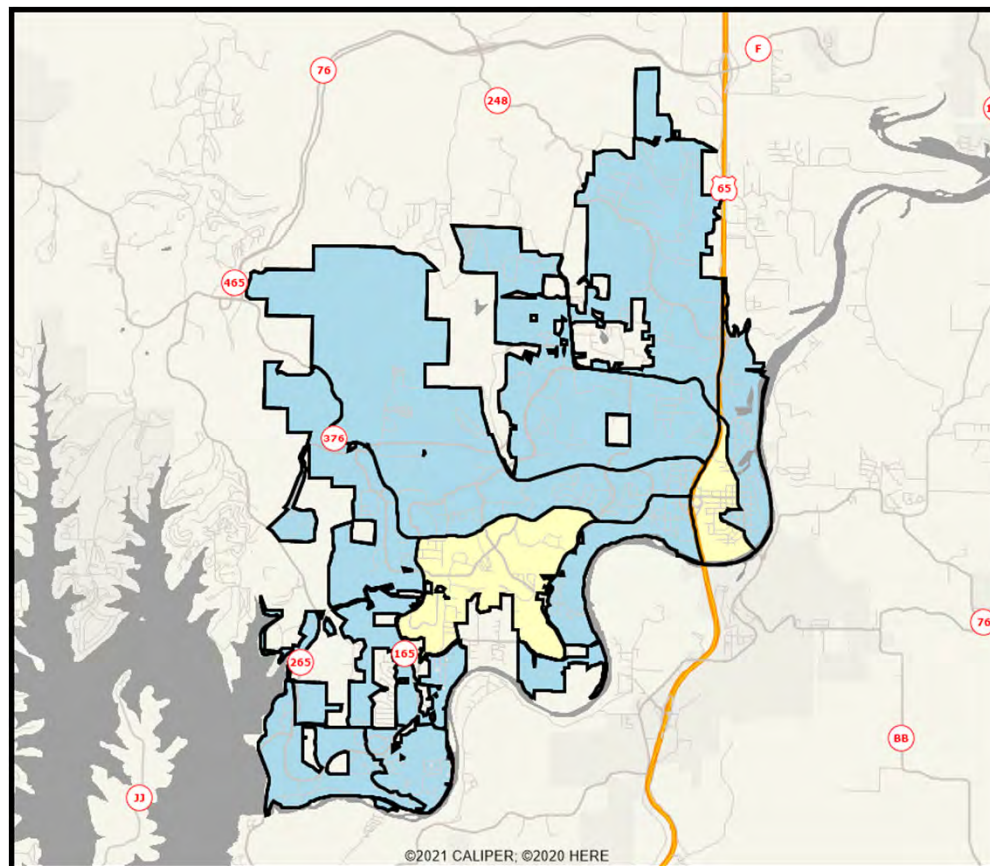
(Shading Reflects the Mean Rating by Census Block Group)



Branson
Community
Survey

Q4-2. Enforcement of local traffic laws

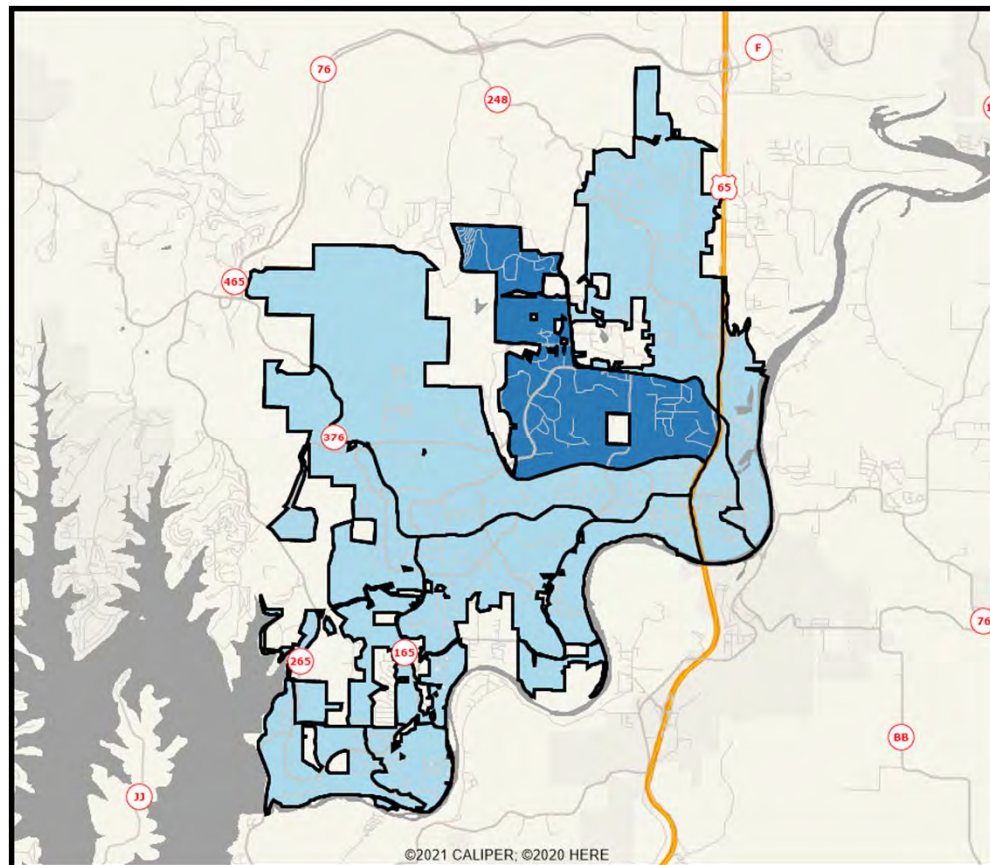
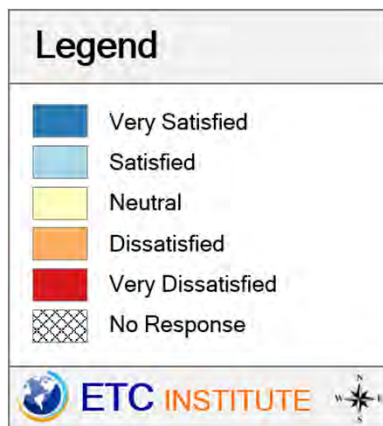
(Shading Reflects the Mean Rating by Census Block Group)



Branson
Community
Survey

Q4-3. How quickly police respond to emergencies

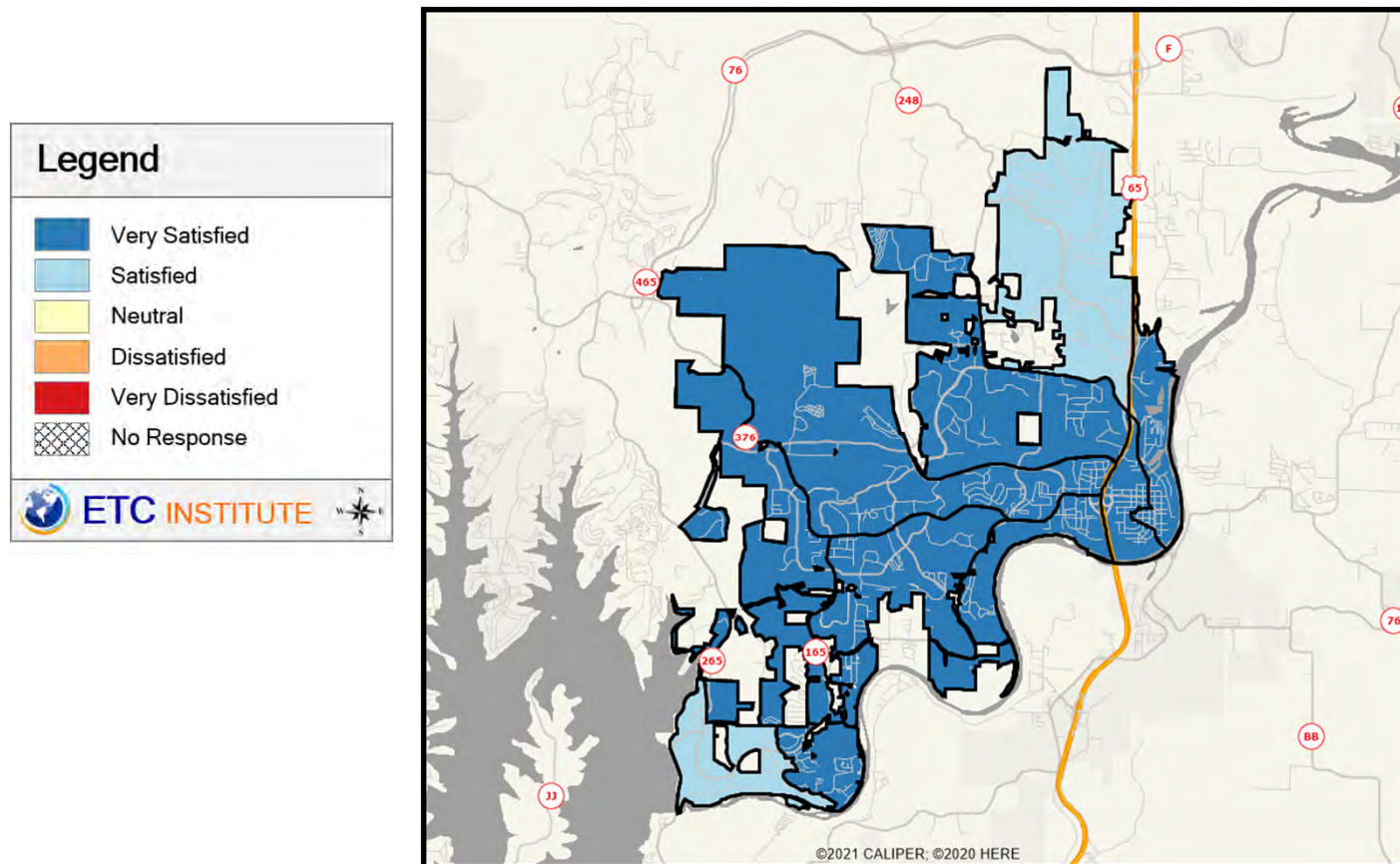
(Shading Reflects the Mean Rating by Census Block Group)



Branson
Community
Survey

Q4-4. How quickly fire personnel respond to emergencies

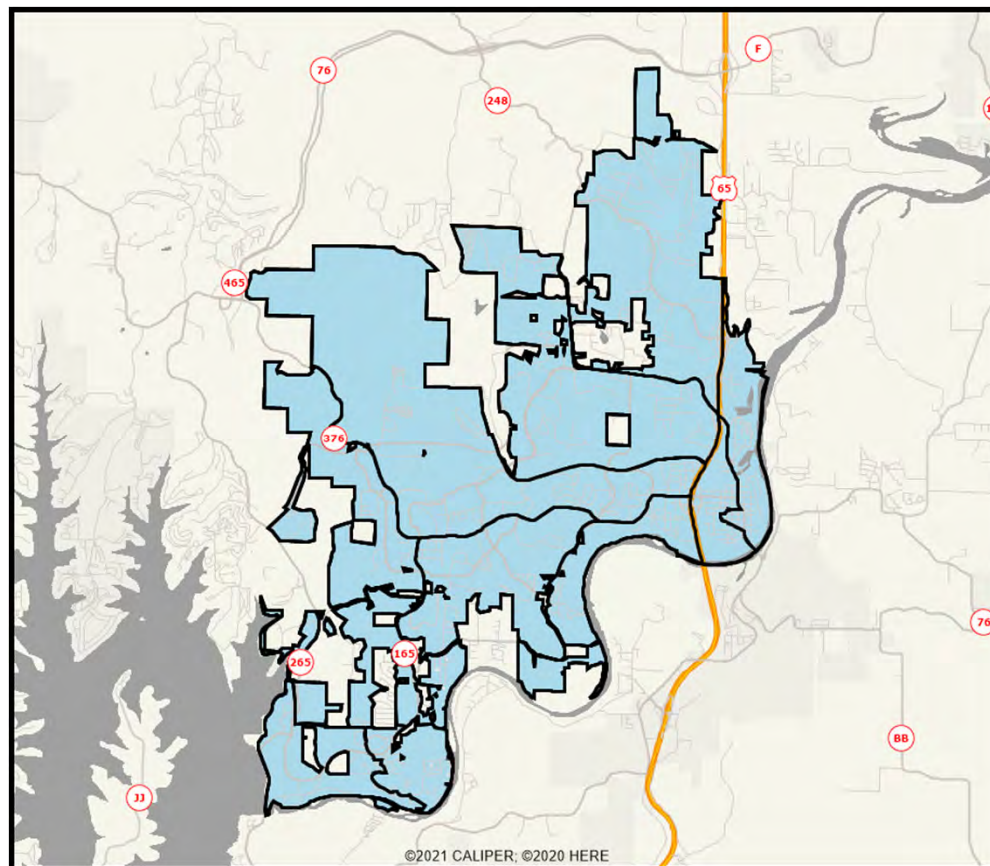
(Shading Reflects the Mean Rating by Census Block Group)



Branson
Community
Survey

Q5-01. Maintenance of City parks

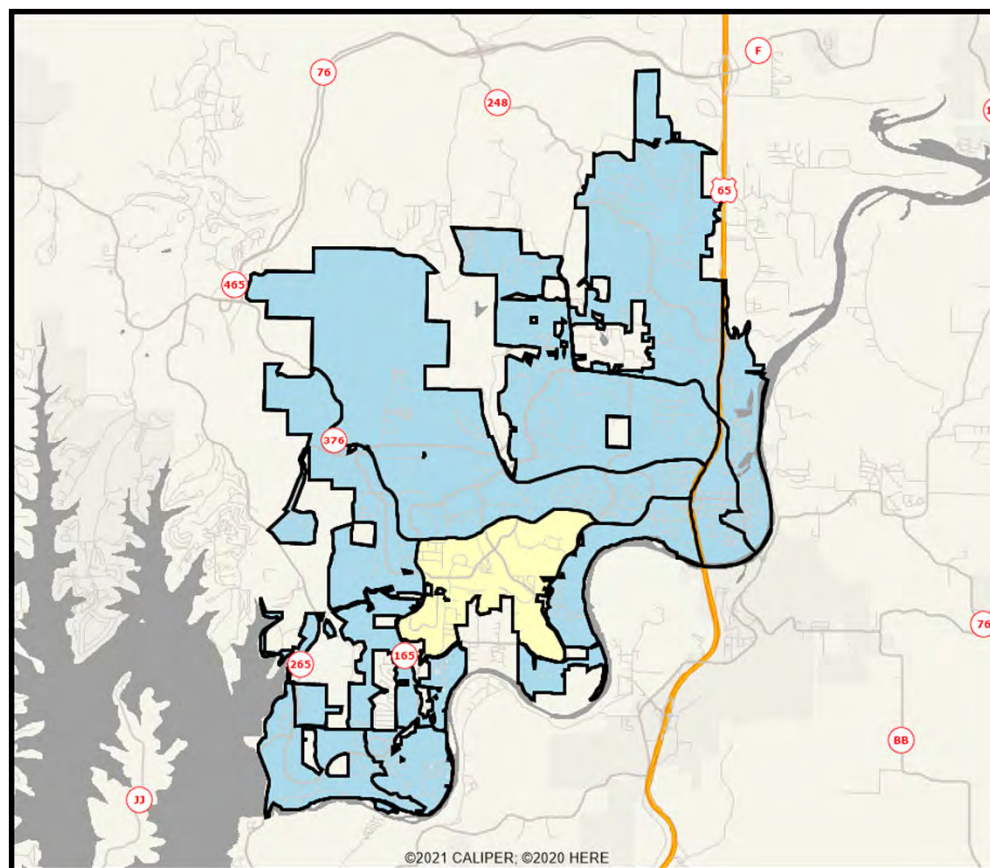
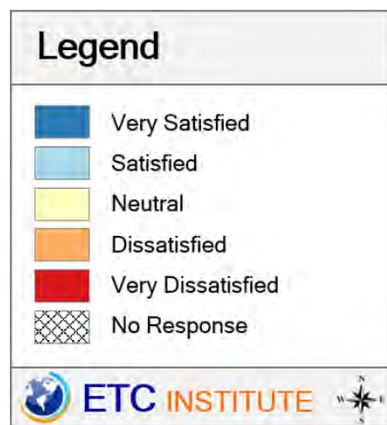
(Shading Reflects the Mean Rating by Census Block Group)



Branson
Community
Survey

Q5-02. Location of City parks

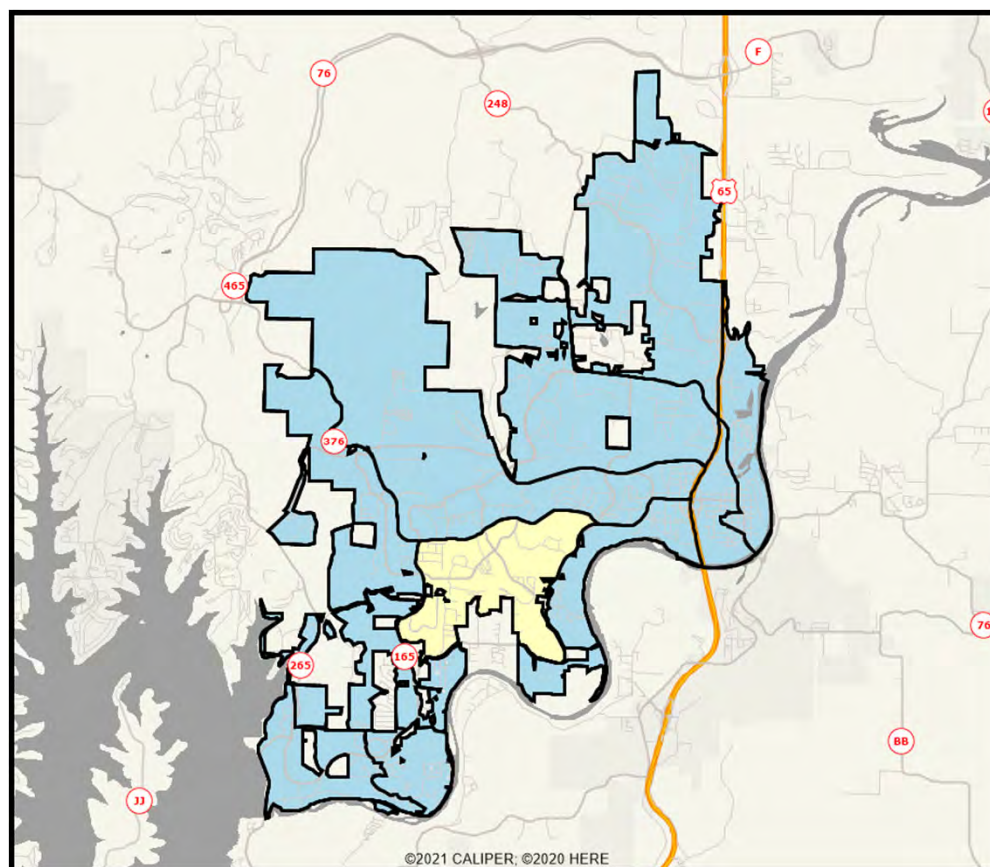
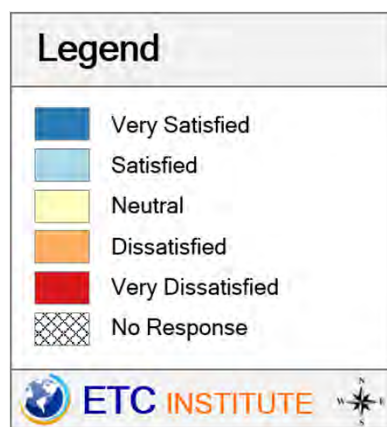
(Shading Reflects the Mean Rating by Census Block Group)



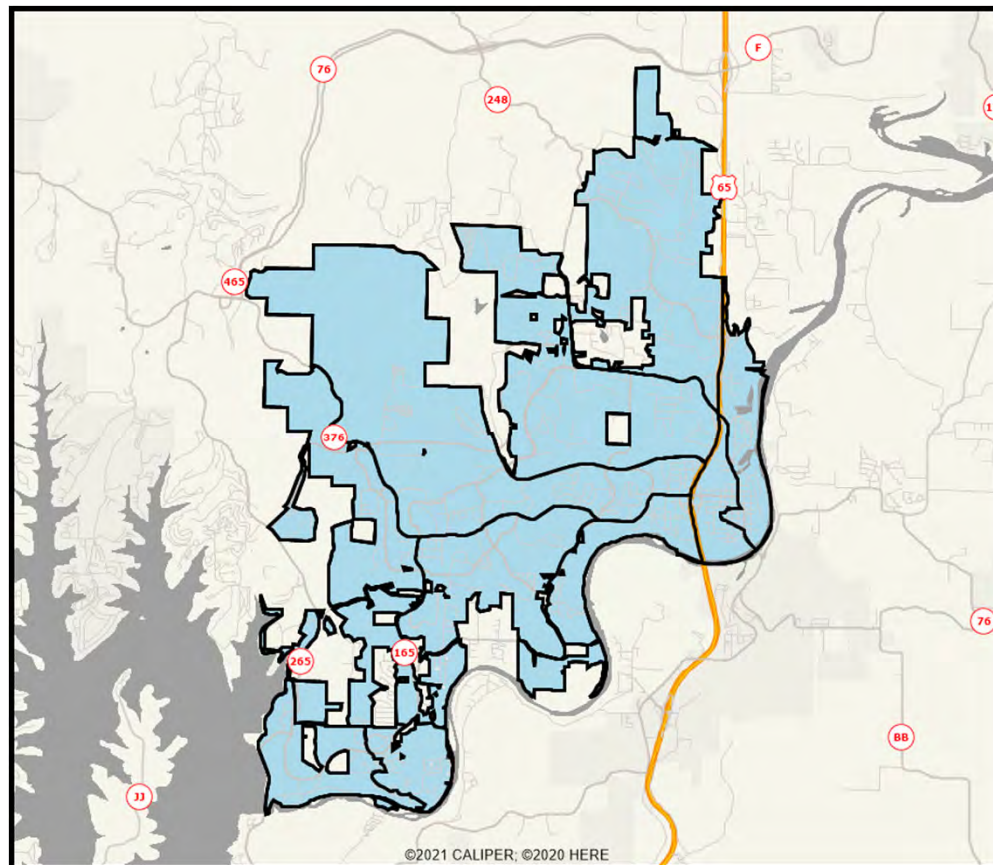
Branson
Community
Survey

Q5-03. Number of walking paths and trails

(Shading Reflects the Mean Rating by Census Block Group)



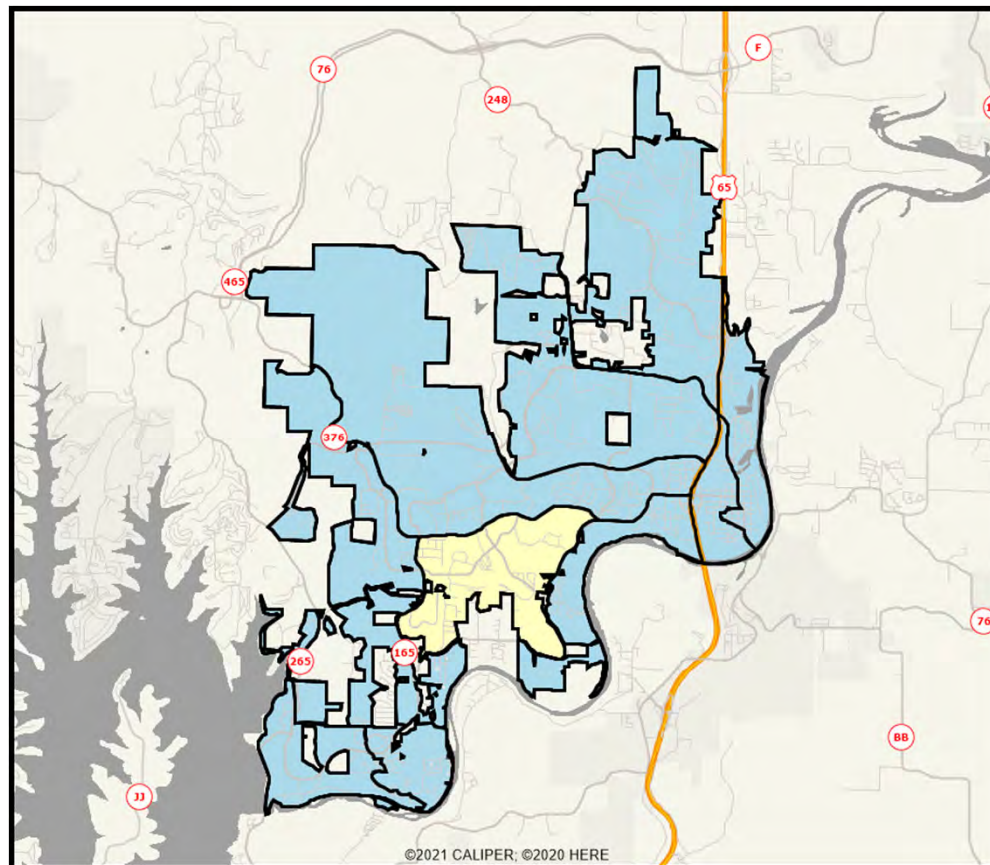
Branson
Community
Survey



Page 32

Q5-05. Quality of City swimming pool

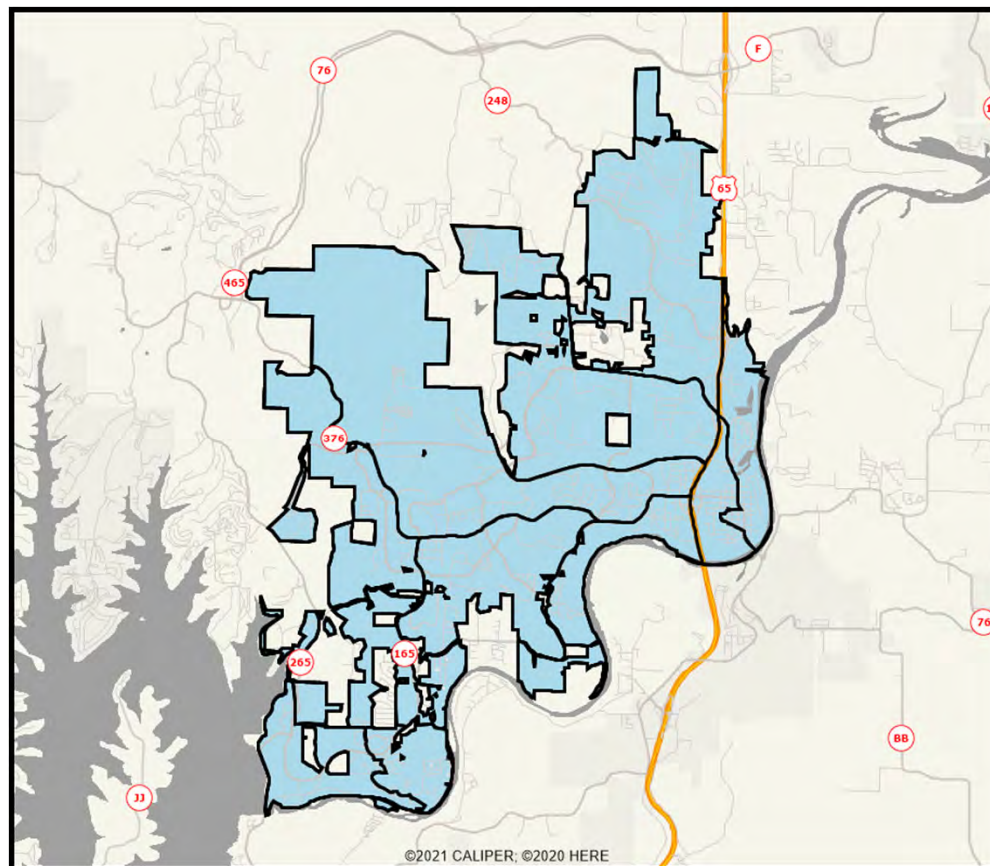
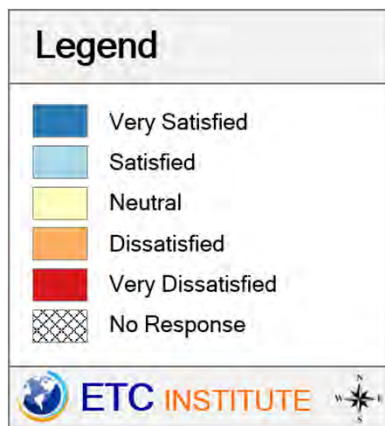
(Shading Reflects the Mean Rating by Census Block Group)



Branson
Community
Survey

Q5-06. Number of outdoor athletic fields

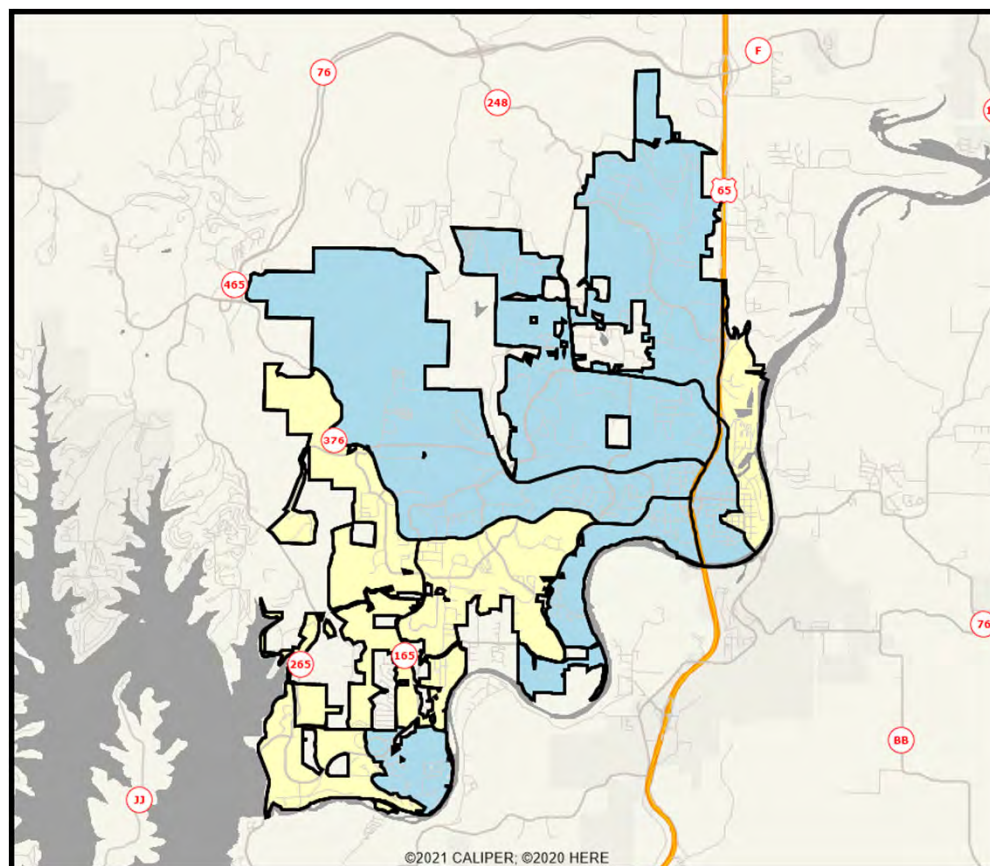
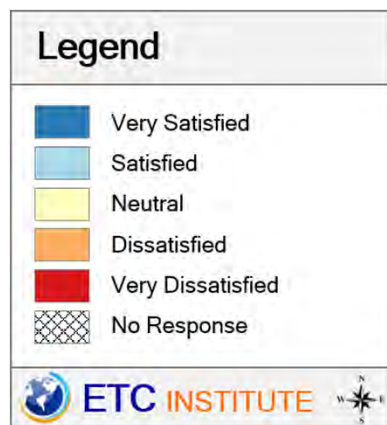
(Shading Reflects the Mean Rating by Census Block Group)



Branson
Community
Survey

Q5-07. Number of indoor gyms

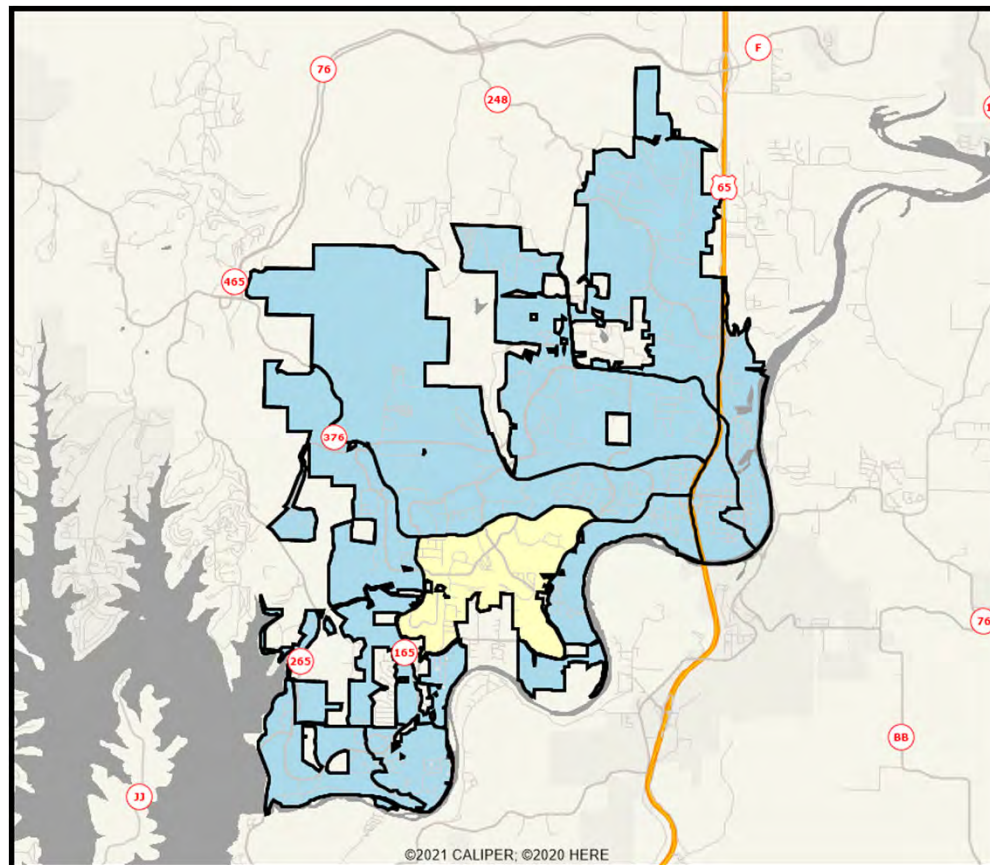
(Shading Reflects the Mean Rating by Census Block Group)



Branson
Community
Survey

Q5-08. Quality of City recreation programs for youth

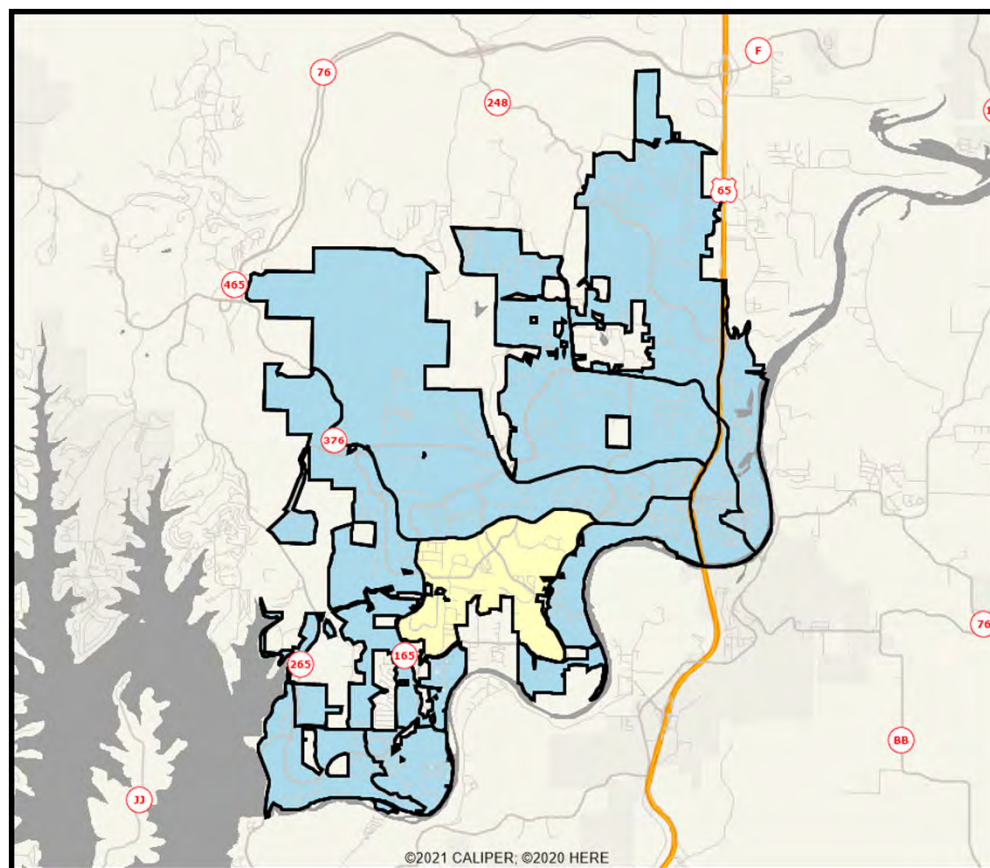
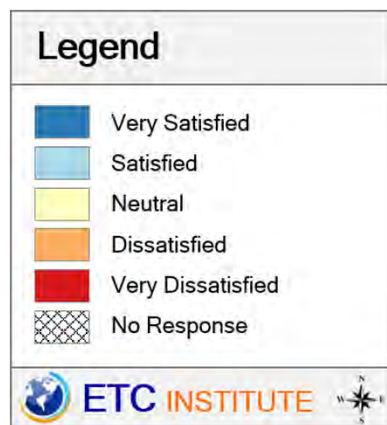
(Shading Reflects the Mean Rating by Census Block Group)



Branson
Community
Survey

Q5-09. Quality of City recreation programs for adults

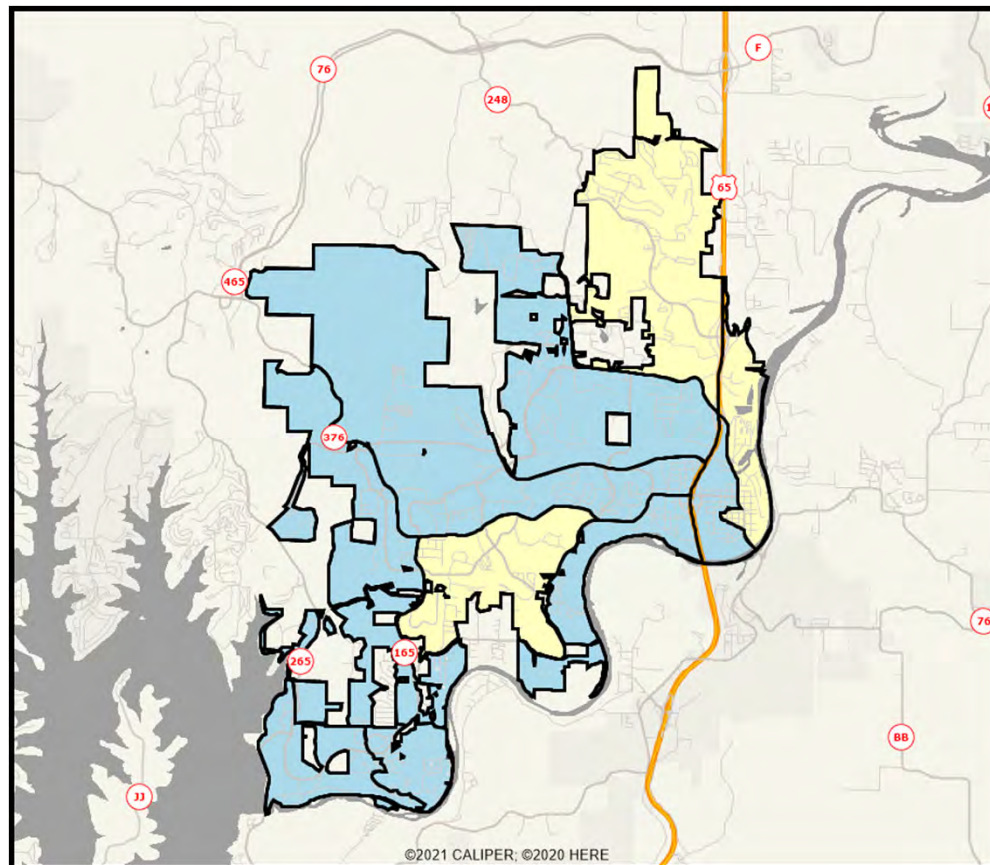
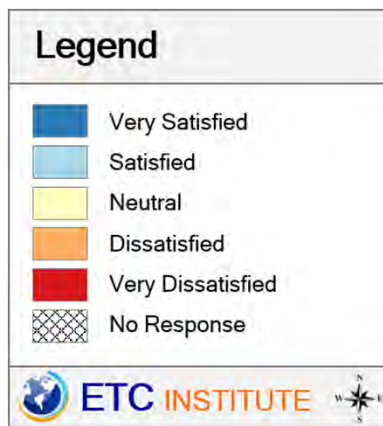
(Shading Reflects the Mean Rating by Census Block Group)



Branson
Community
Survey

Q5-10. Quality of City recreation programs for seniors

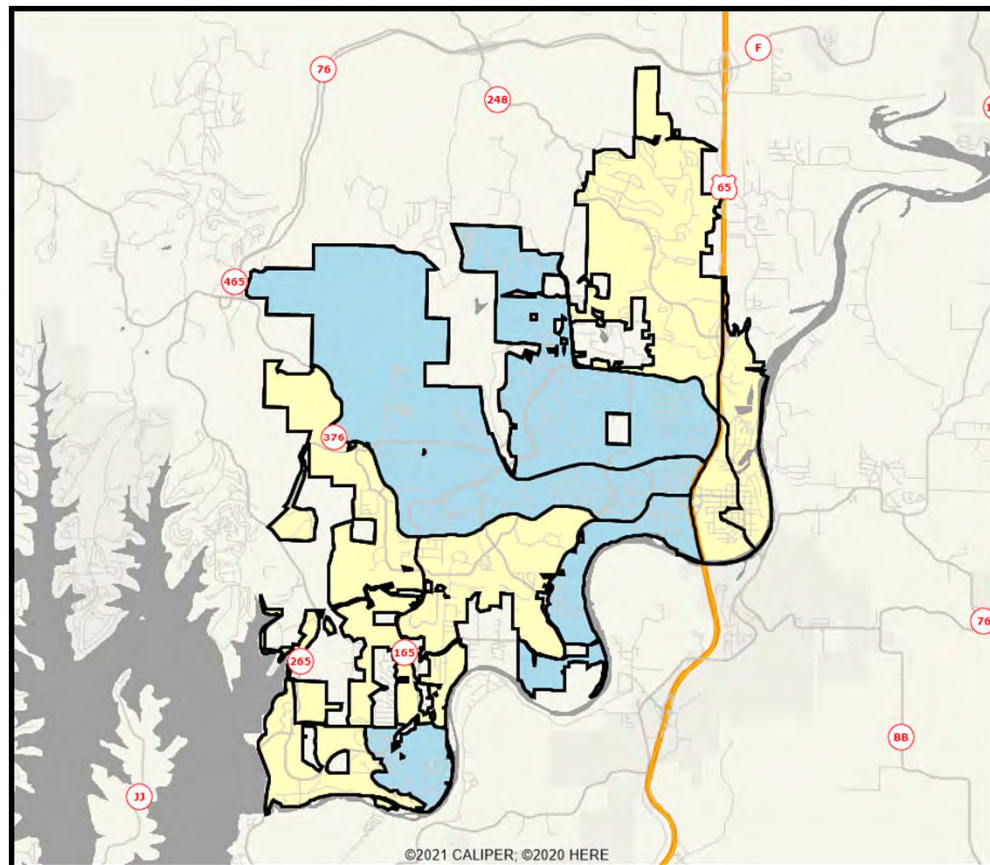
(Shading Reflects the Mean Rating by Census Block Group)



Branson
Community
Survey

Q5-11. Fees charged to participate in programs

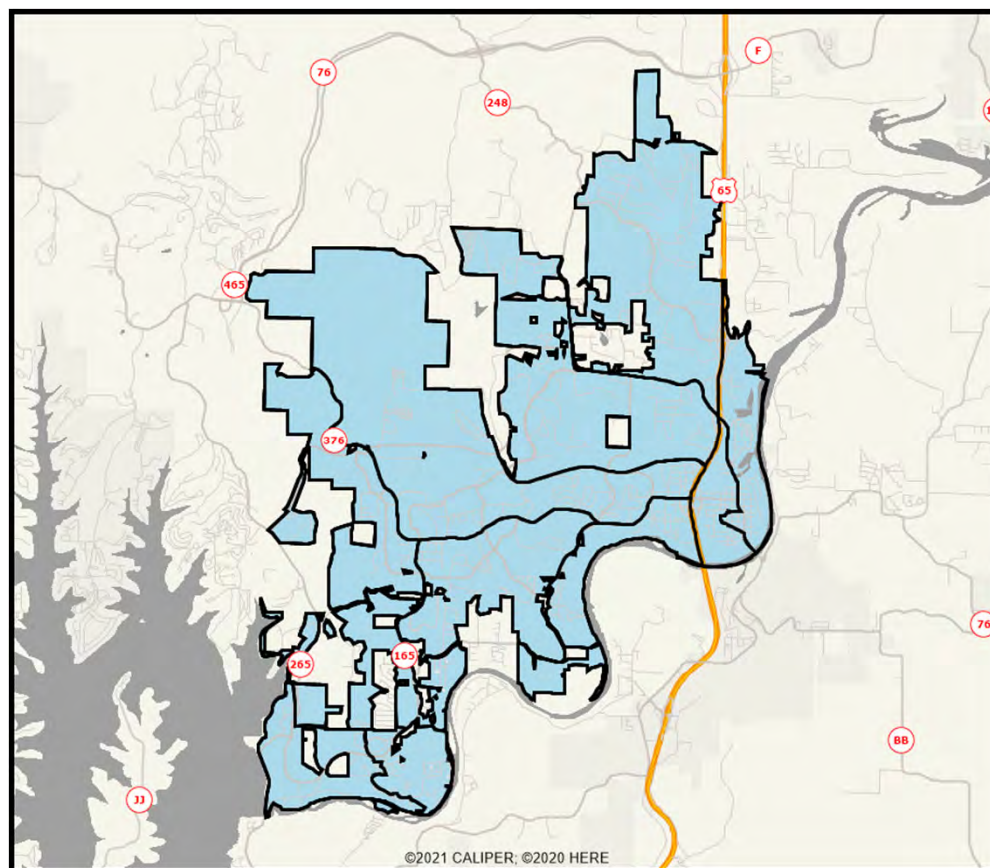
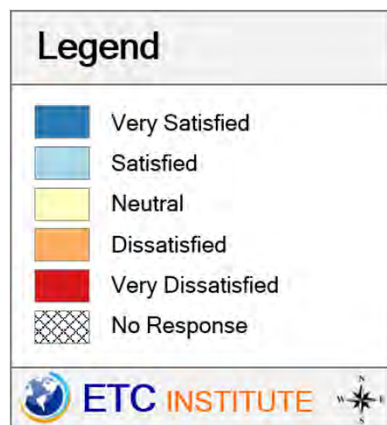
(Shading Reflects the Mean Rating by Census Block Group)



Branson
Community
Survey

Q5-12. Number of City parks

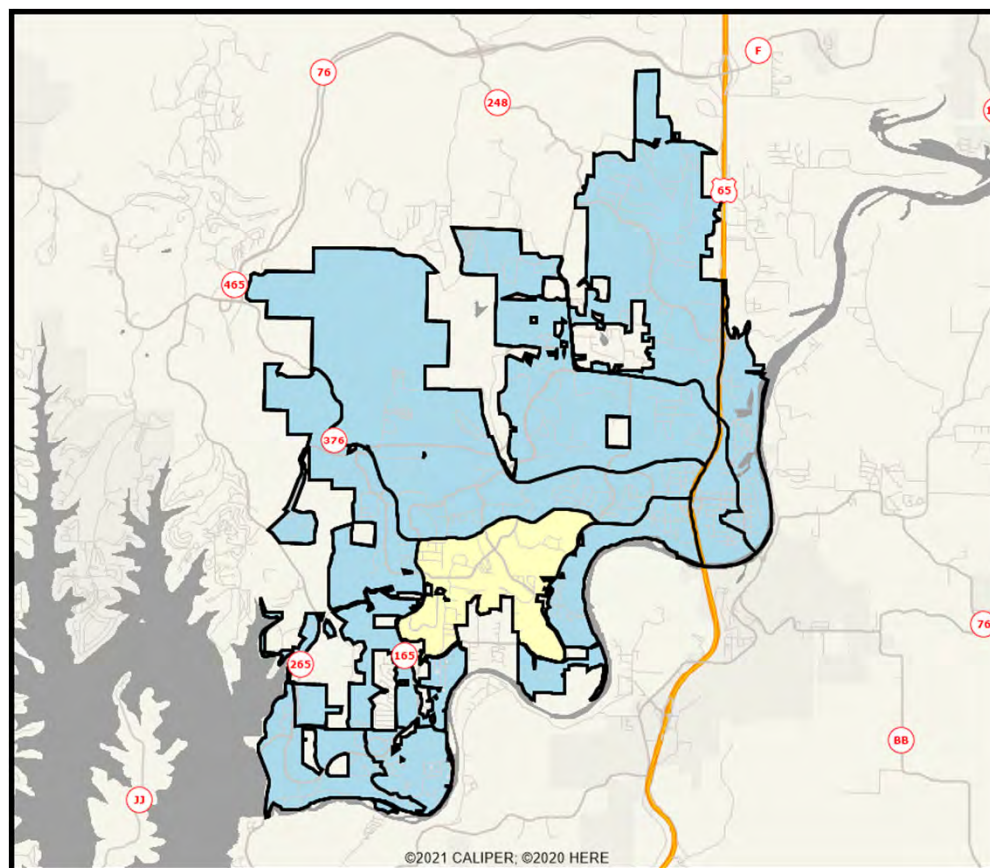
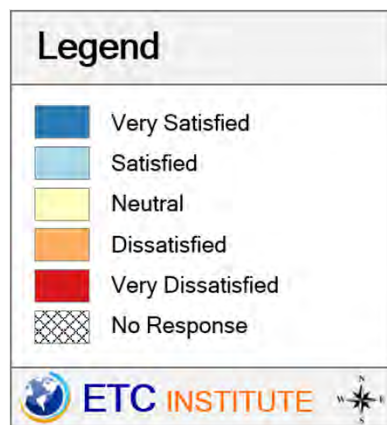
(Shading Reflects the Mean Rating by Census Block Group)



Branson
Community
Survey

Q5-13. Quality of events

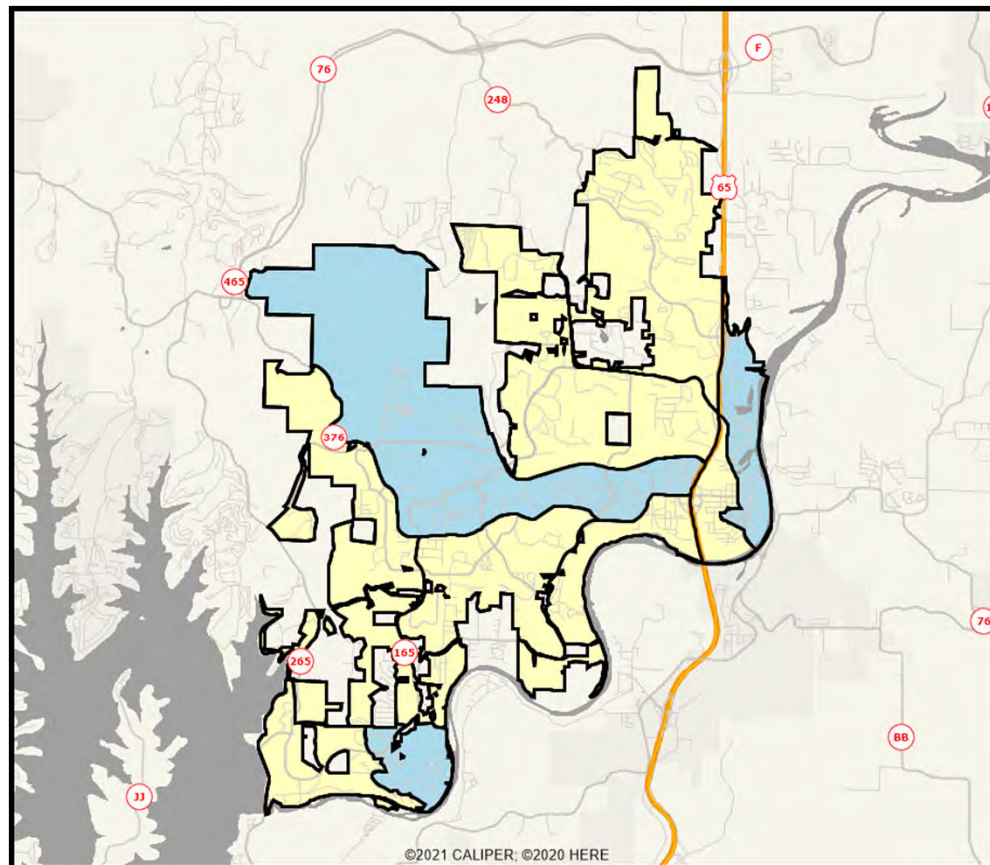
(Shading Reflects the Mean Rating by Census Block Group)



Branson
Community
Survey

Q7-1. The availability of information about City programs and services

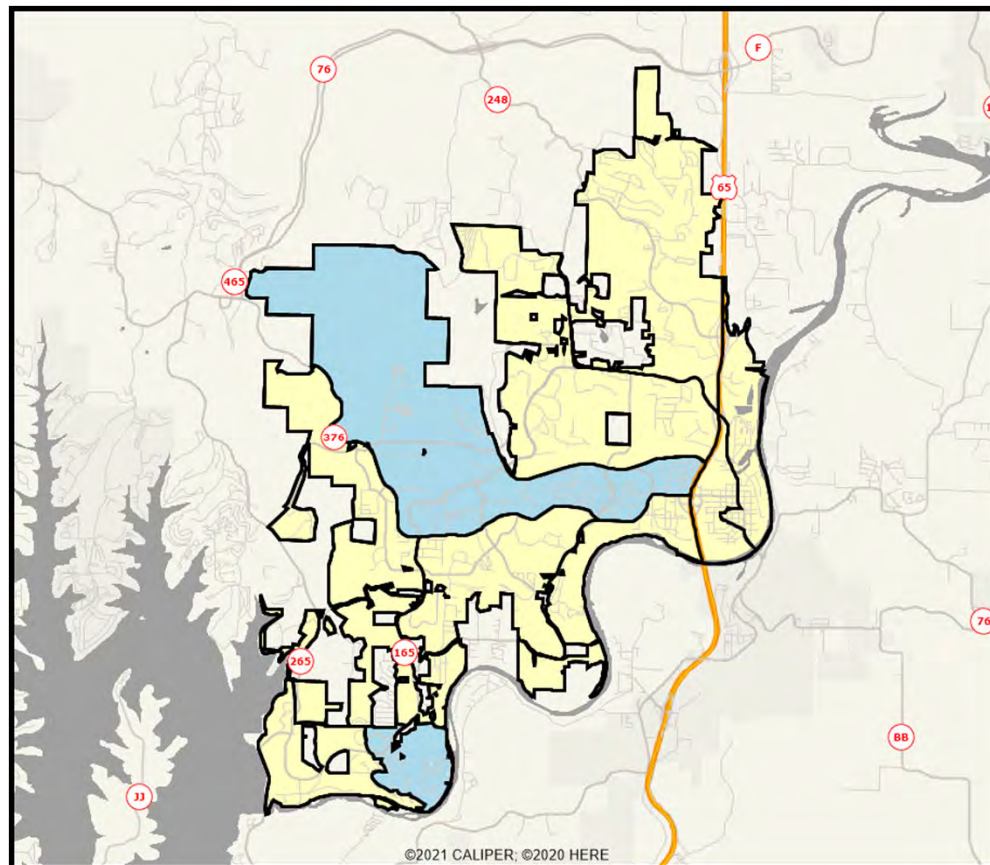
(Shading Reflects the Mean Rating by Census Block Group)



Branson
Community
Survey

Q7-2. City efforts to keep you informed about local issues

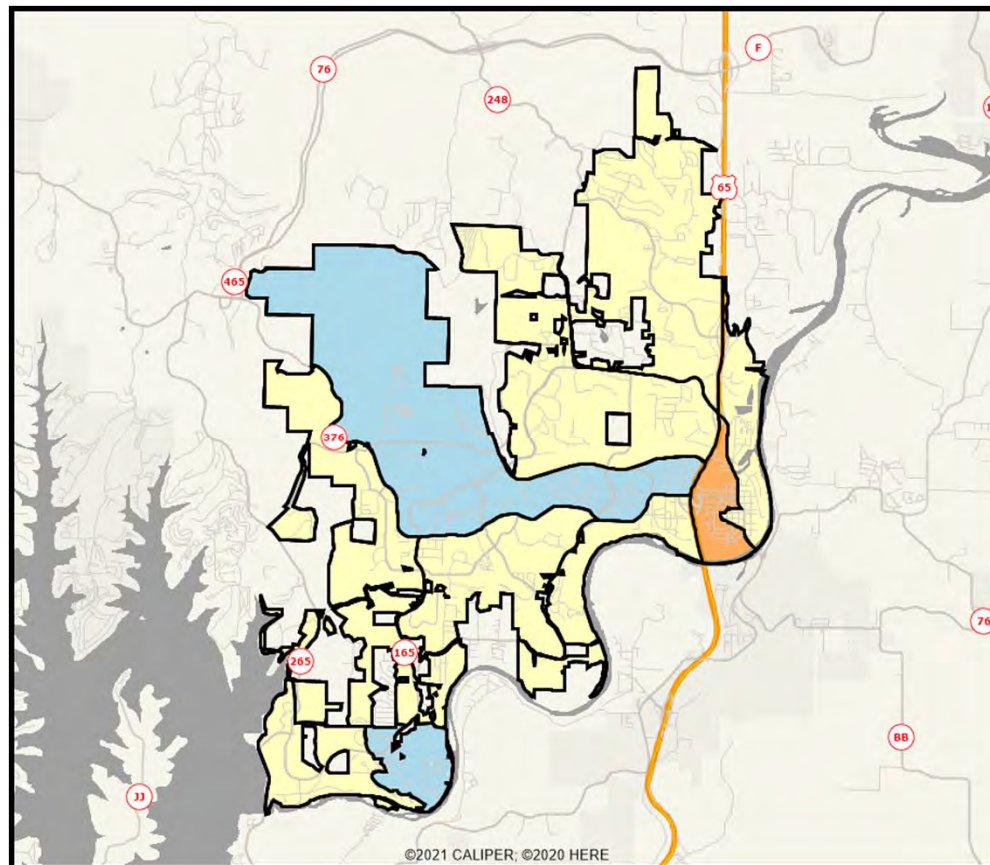
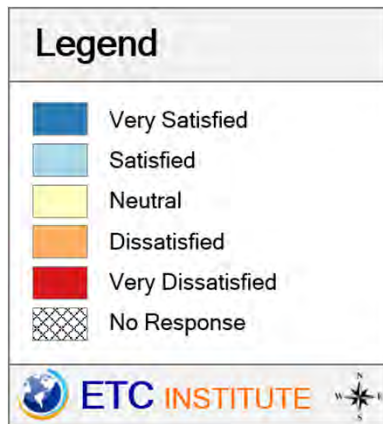
(Shading Reflects the Mean Rating by Census Block Group)



Branson
Community
Survey

Q7-3. City efforts to have an open, inclusive, responsive government

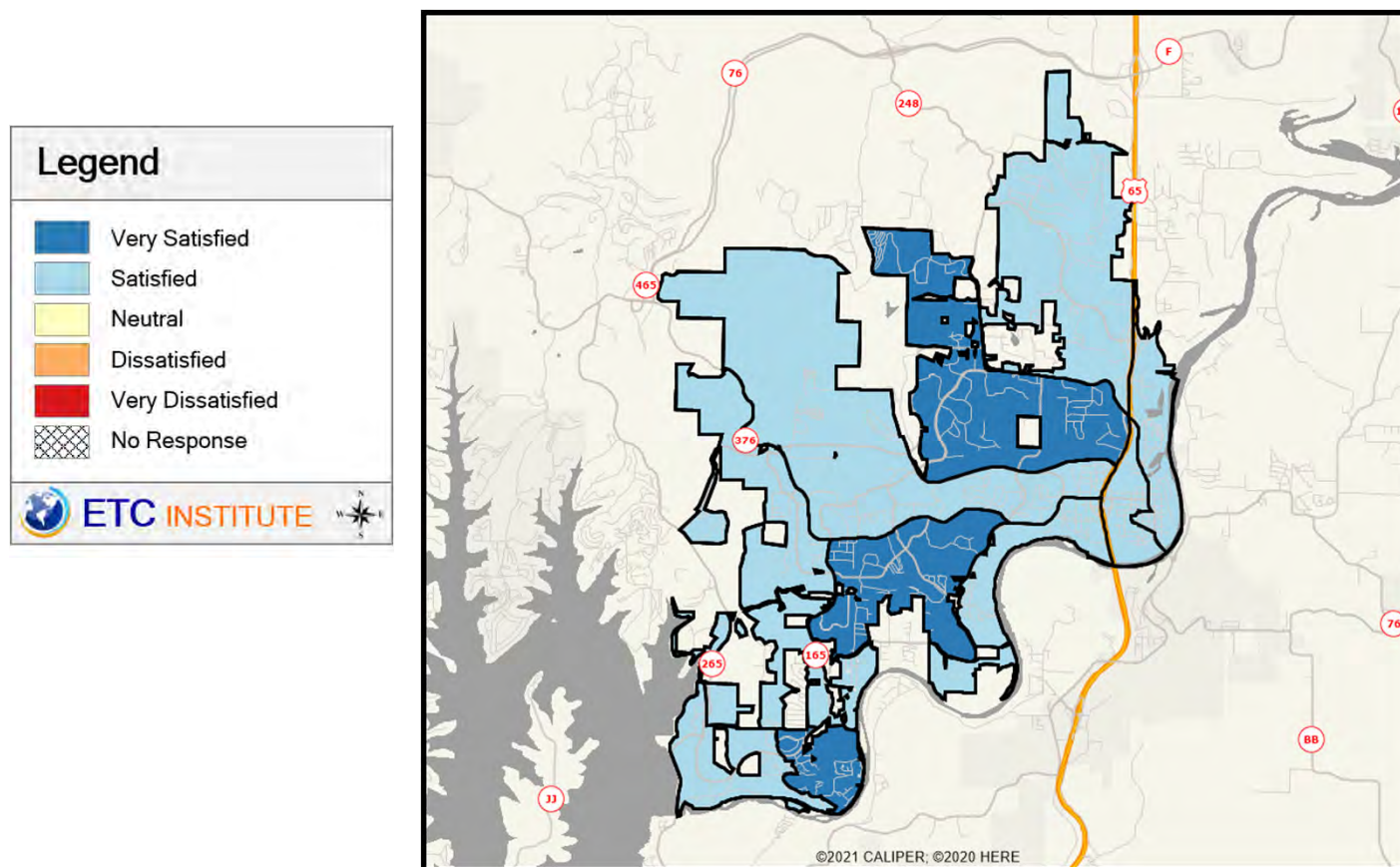
(Shading Reflects the Mean Rating by Census Block Group)



Branson
Community
Survey

Q11-1. Reliability of City of Branson's water service

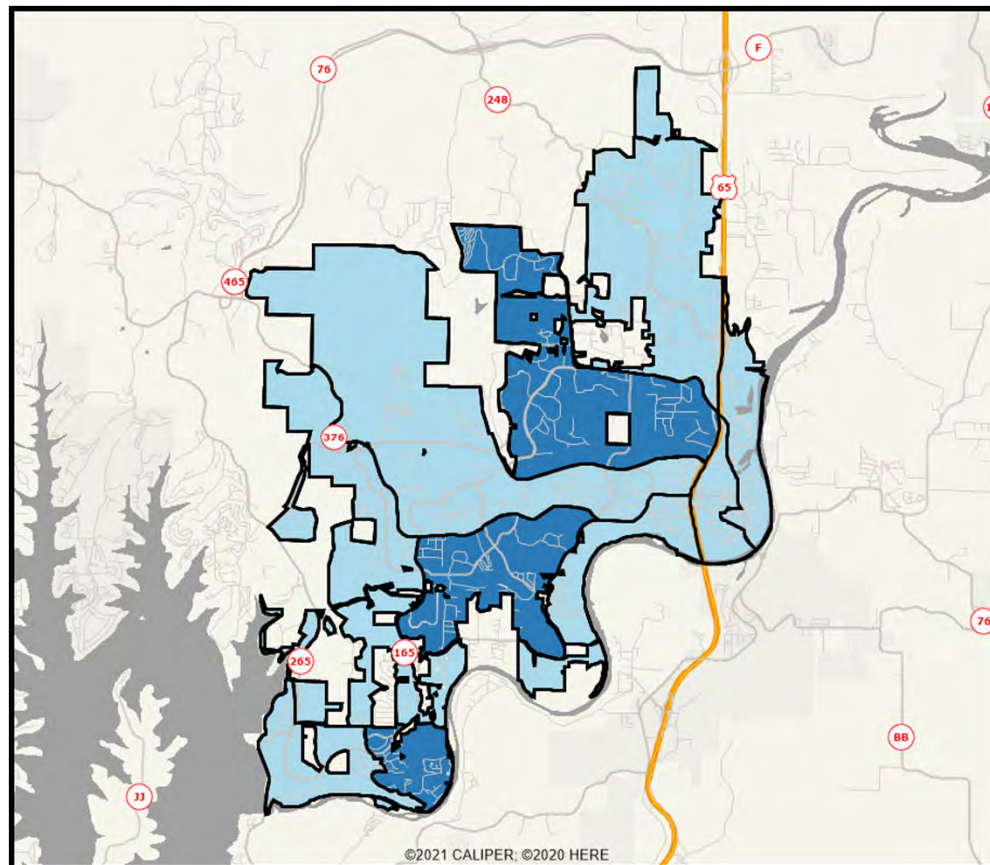
(Shading Reflects the Mean Rating by Census Block Group)



Branson
Community
Survey

Q11-2. Reliability of City of Branson's wastewater services

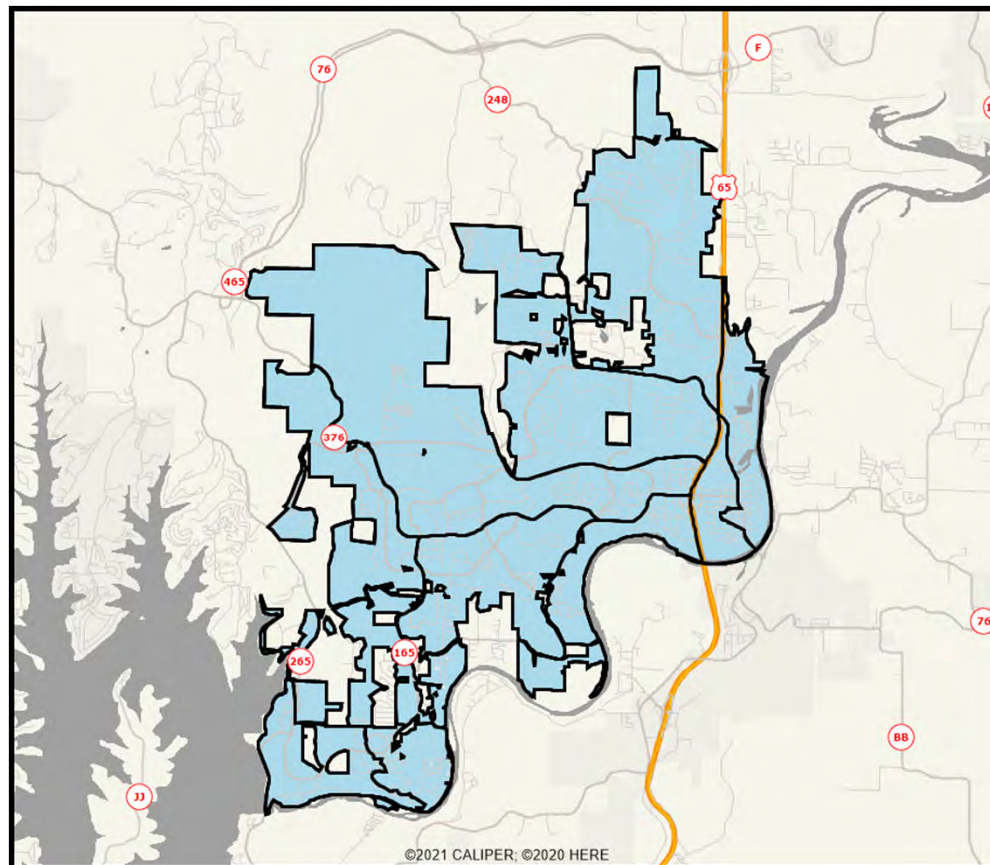
(Shading Reflects the Mean Rating by Census Block Group)



Branson
Community
Survey

Q11-3. Response to City of Branson's water and sewer issues/concerns

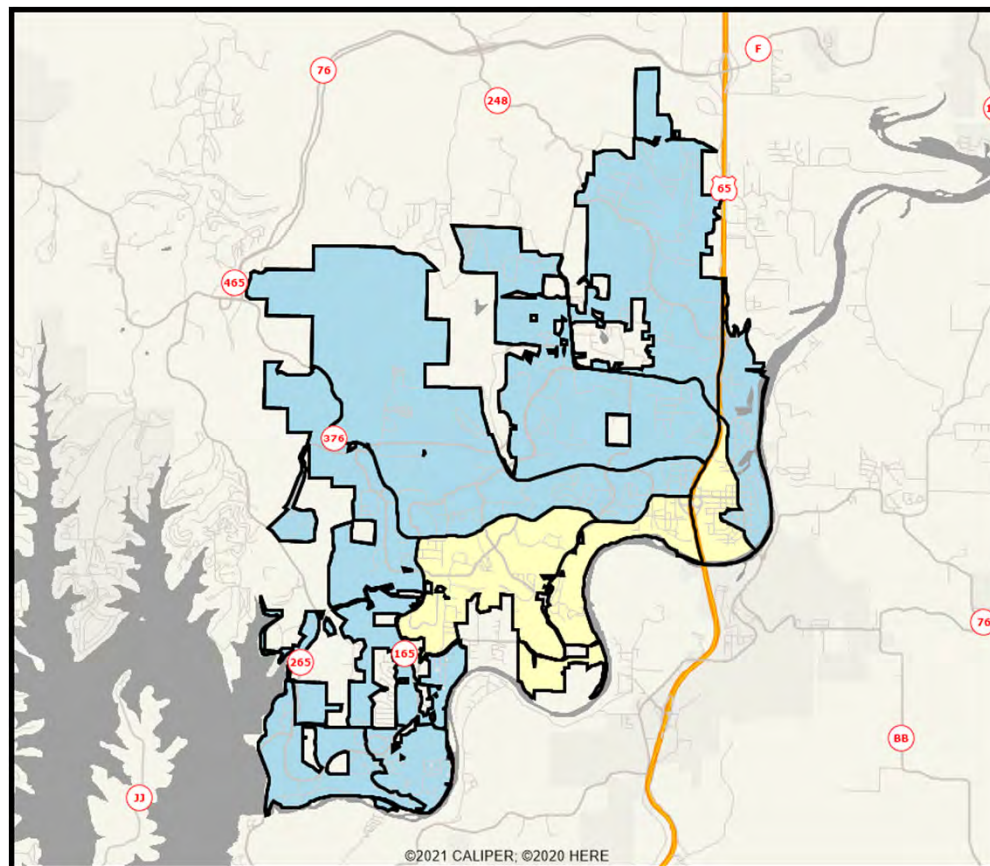
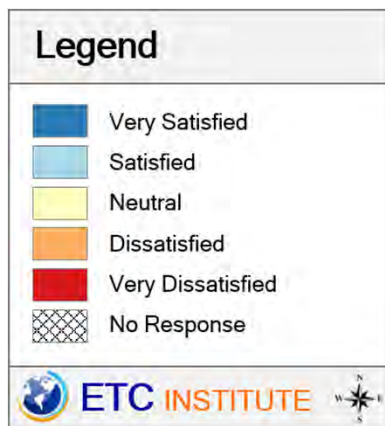
(Shading Reflects the Mean Rating by Census Block Group)



Branson
Community
Survey

Q12-1. Condition of major City streets

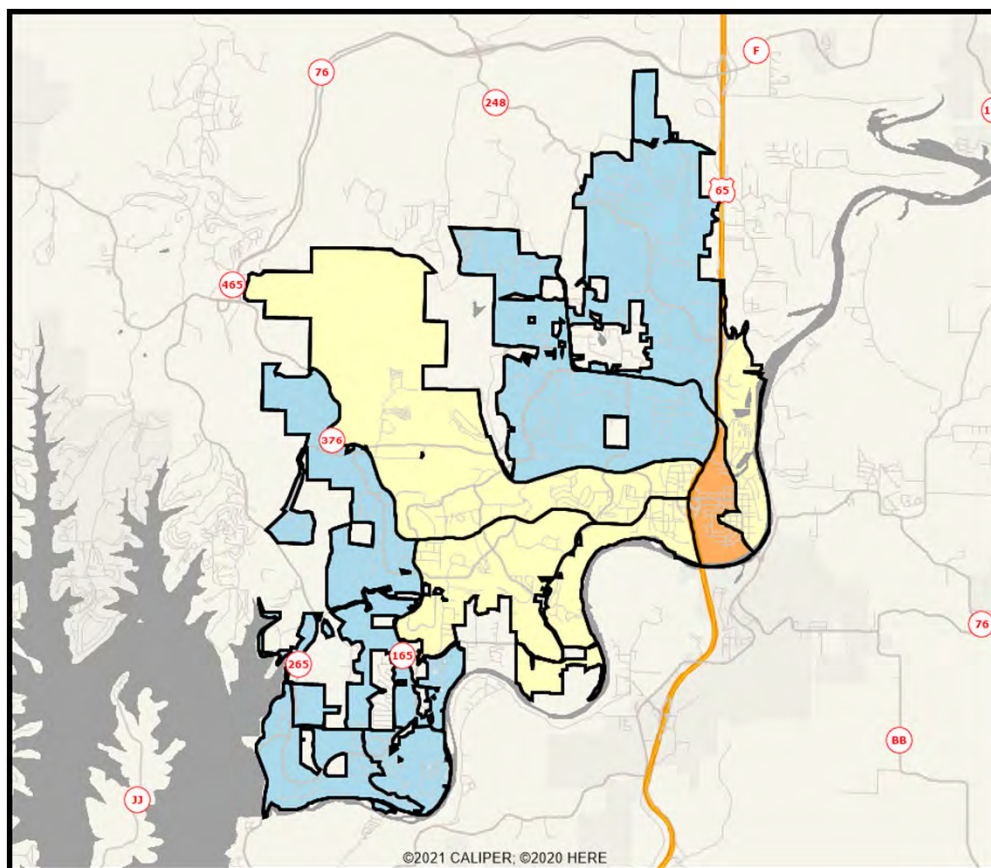
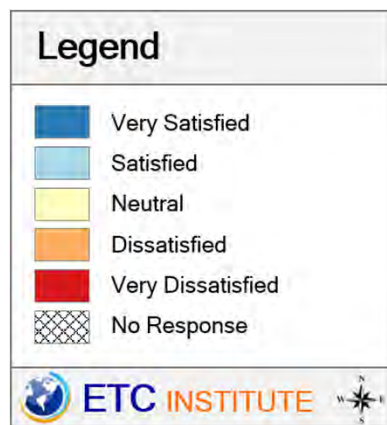
(Shading Reflects the Mean Rating by Census Block Group)



Branson
Community
Survey

Q12-2. Condition of streets in YOUR neighborhood

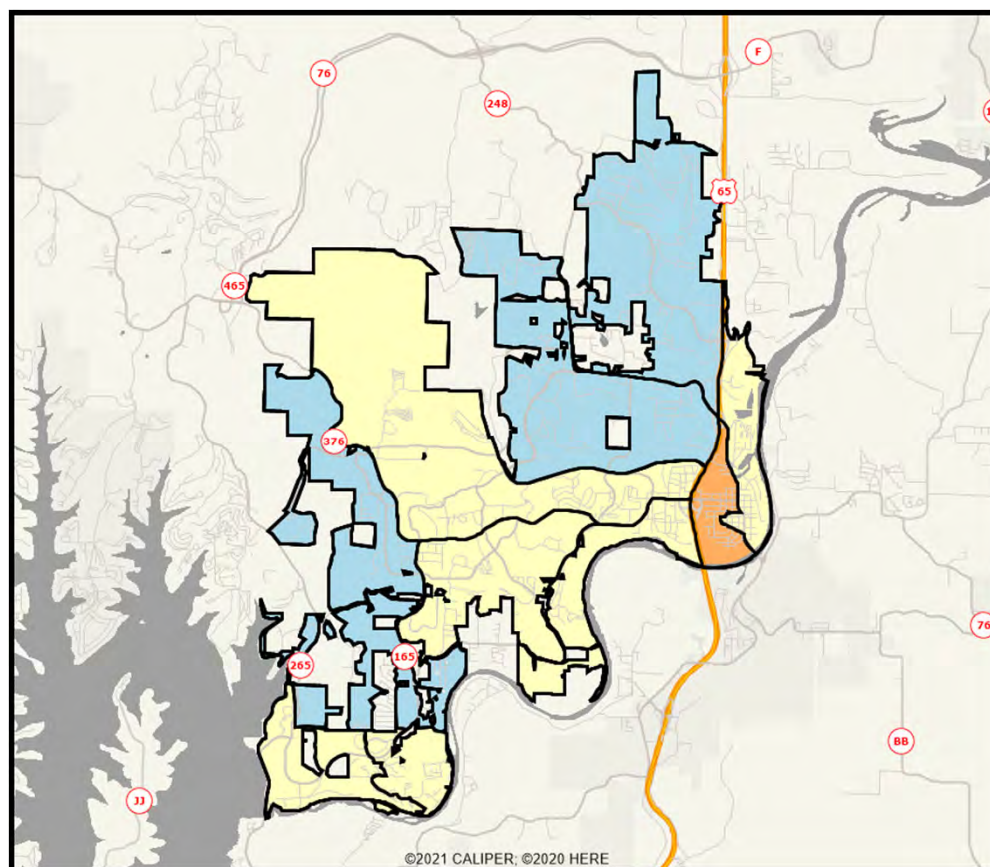
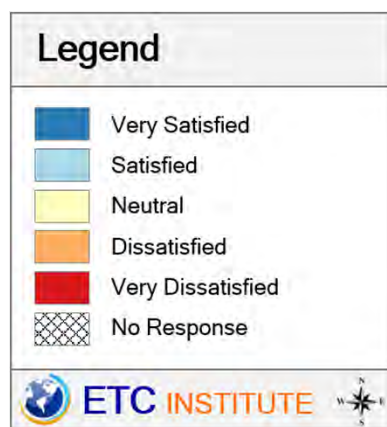
(Shading Reflects the Mean Rating by Census Block Group)



Branson
Community
Survey

Q12-3. Condition of City sidewalks

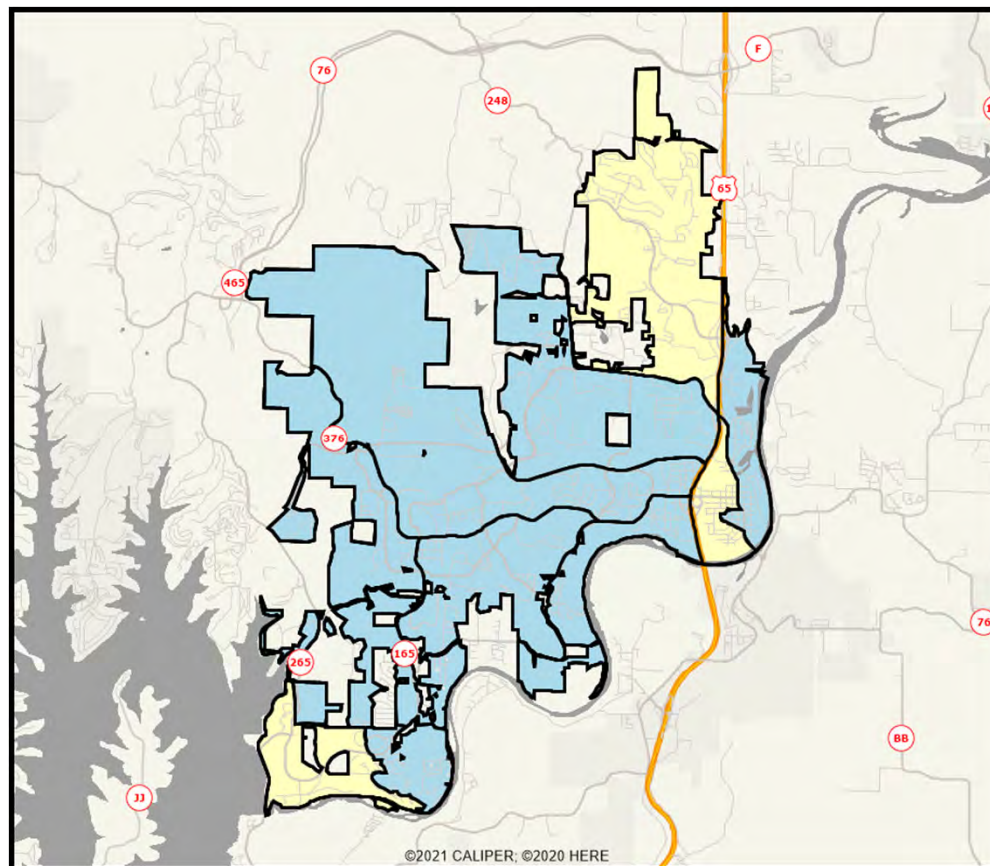
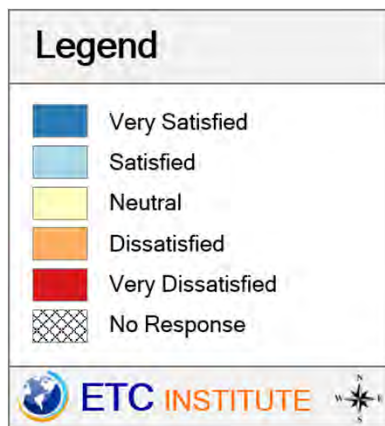
(Shading Reflects the Mean Rating by Census Block Group)



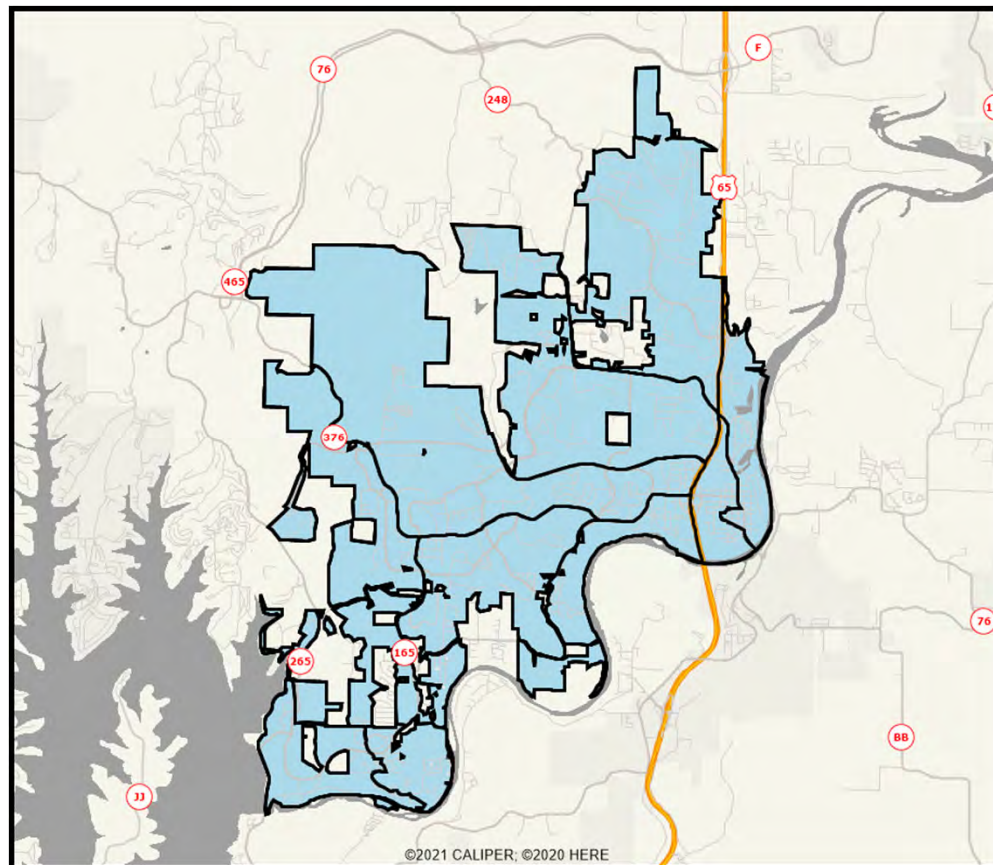
Branson
Community
Survey

Q12-4. Quality of City snow removal

(Shading Reflects the Mean Rating by Census Block Group)



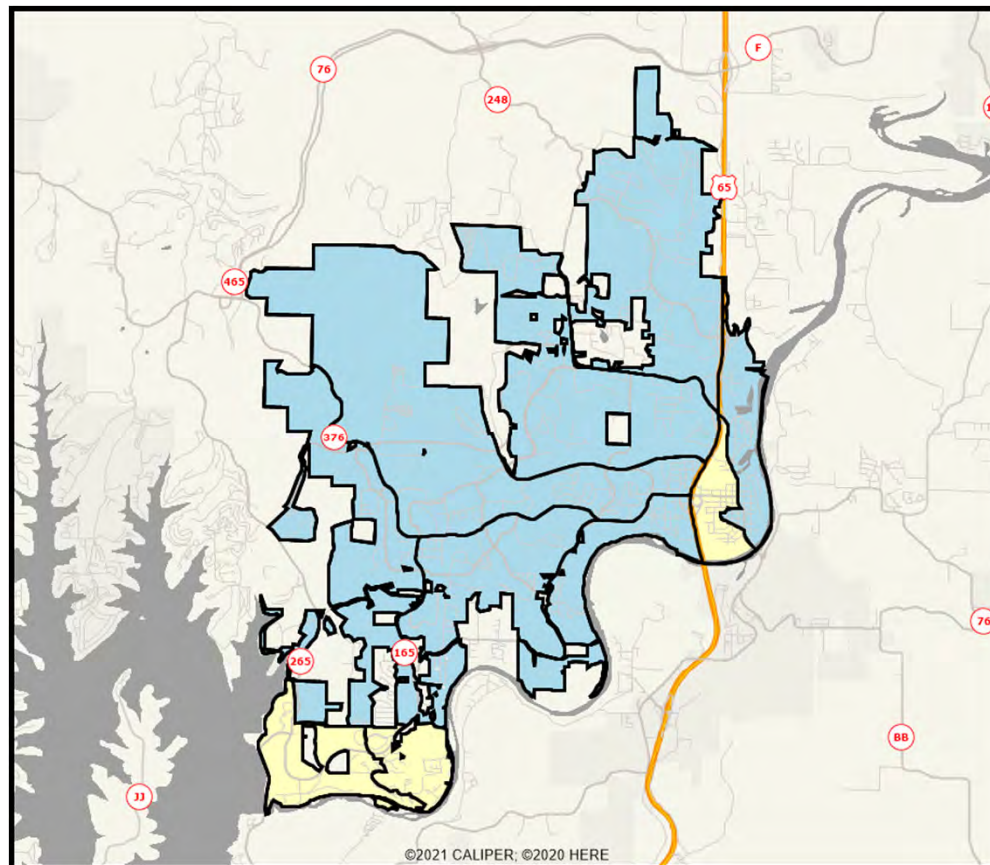
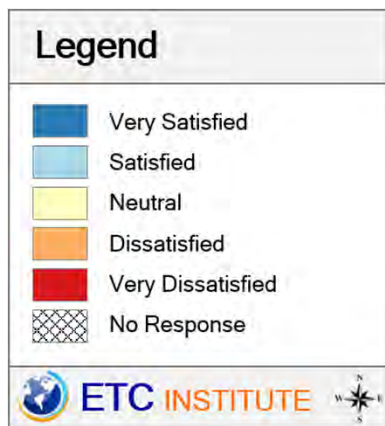
Branson
Community
Survey



Page 52

Q12-6. Mowing and trimming along City streets and other public areas

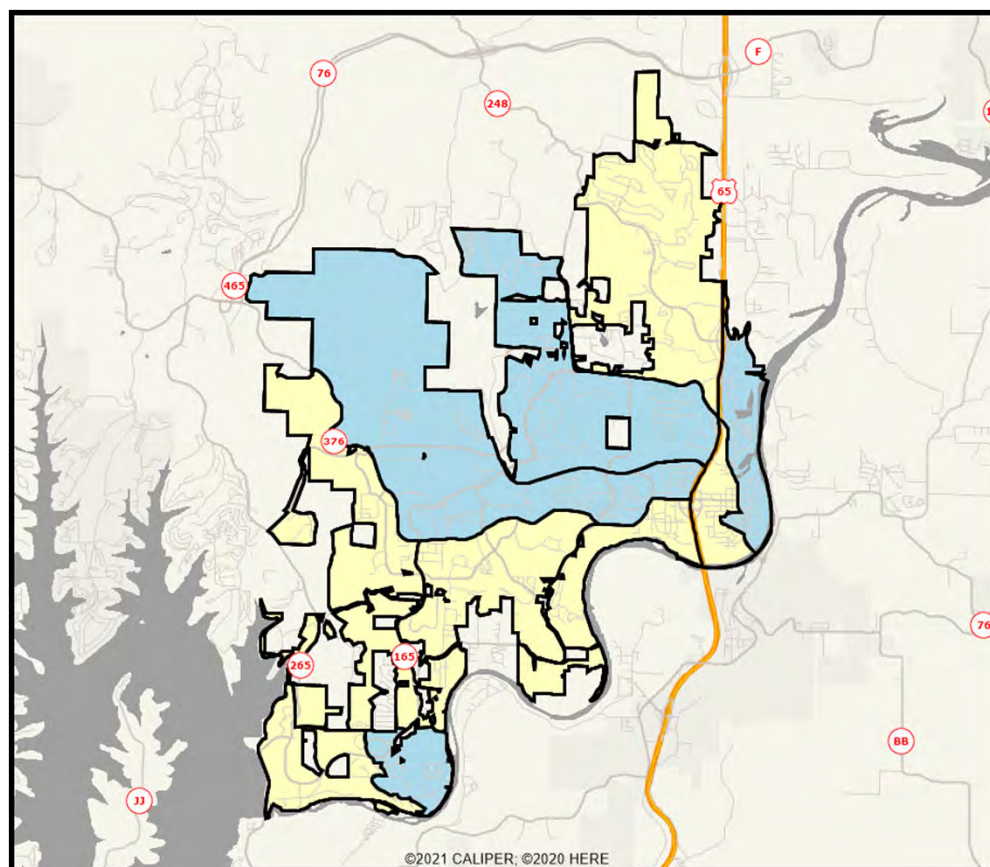
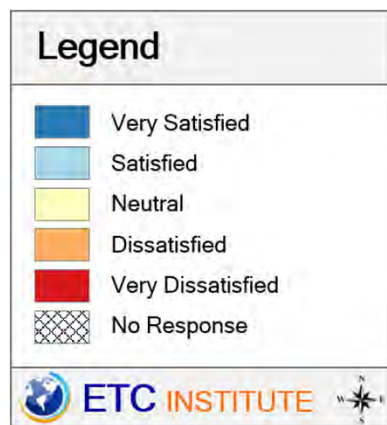
(Shading Reflects the Mean Rating by Census Block Group)



Branson
Community
Survey

Q12-7. Adequacy of City street lighting

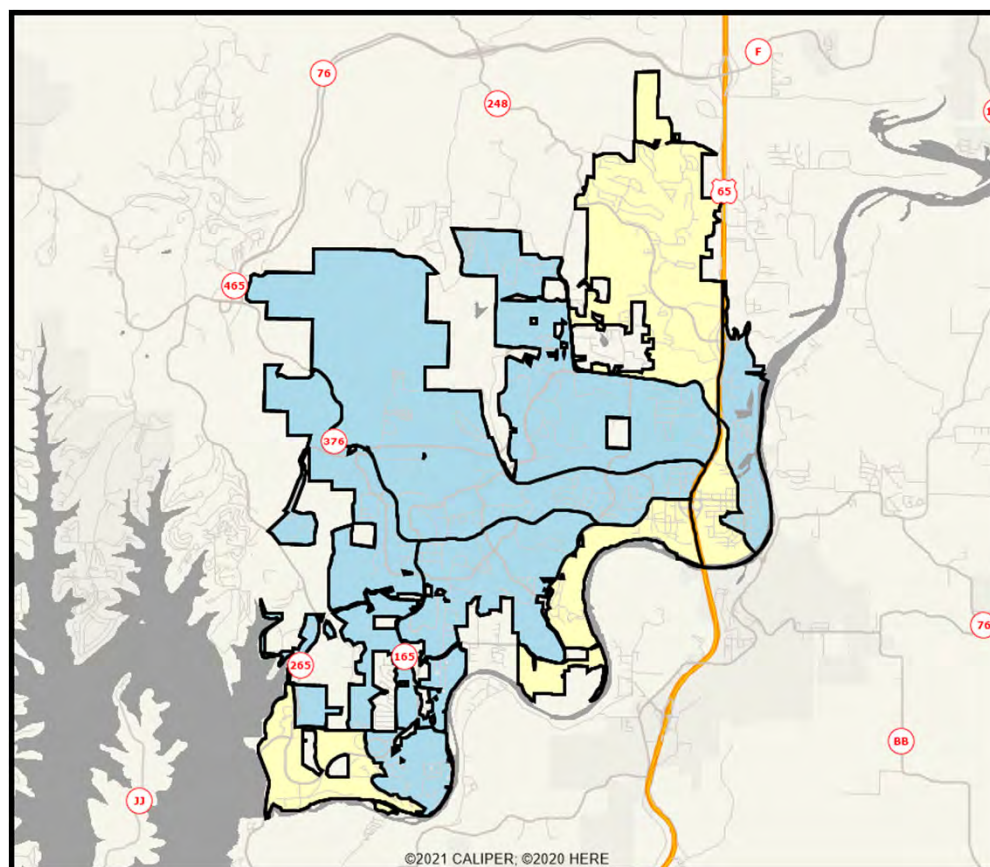
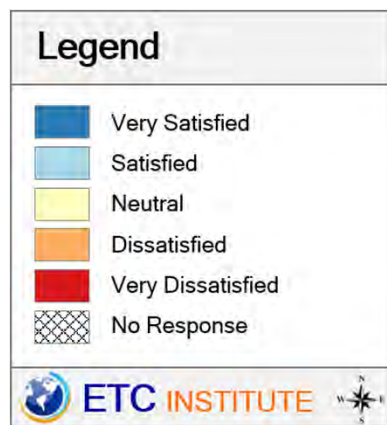
(Shading Reflects the Mean Rating by Census Block Group)



Branson
Community
Survey

Q12-8. Cleanliness of City streets

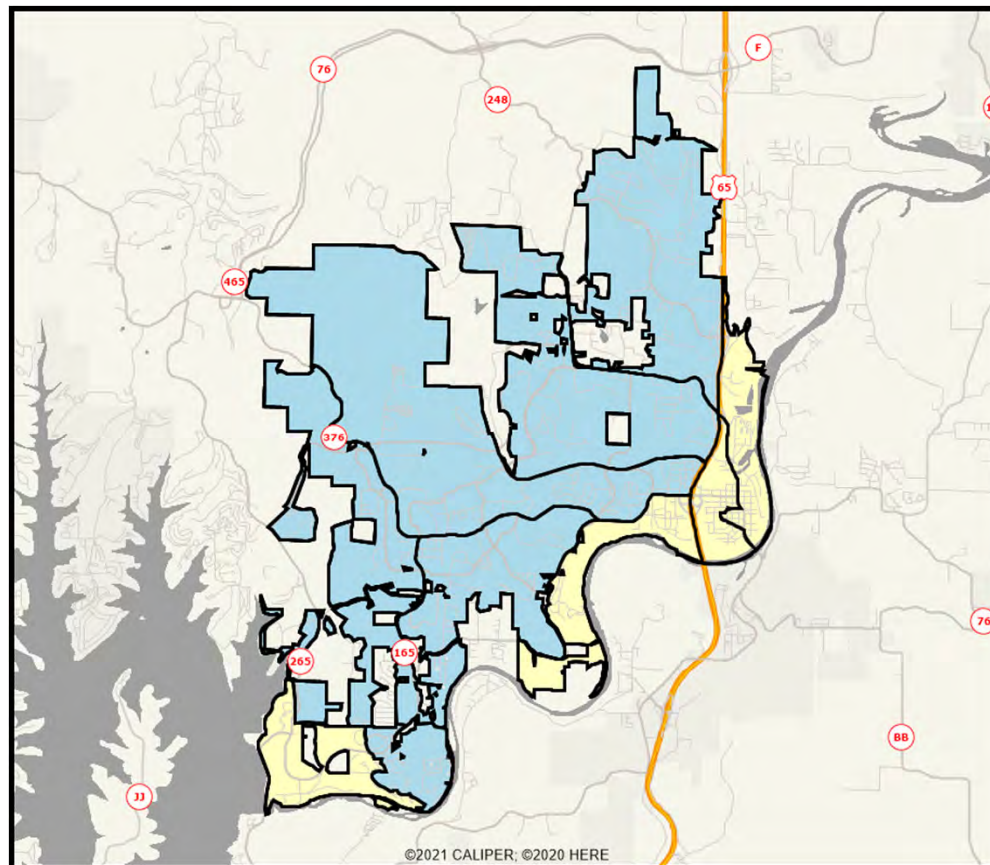
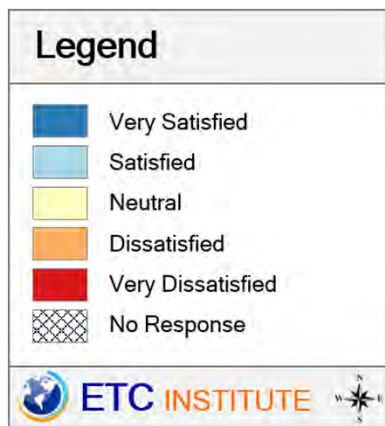
(Shading Reflects the Mean Rating by Census Block Group)



Branson
Community
Survey

Q12-9. Cleanliness of stormwater drains and creeks in YOUR neighborhood

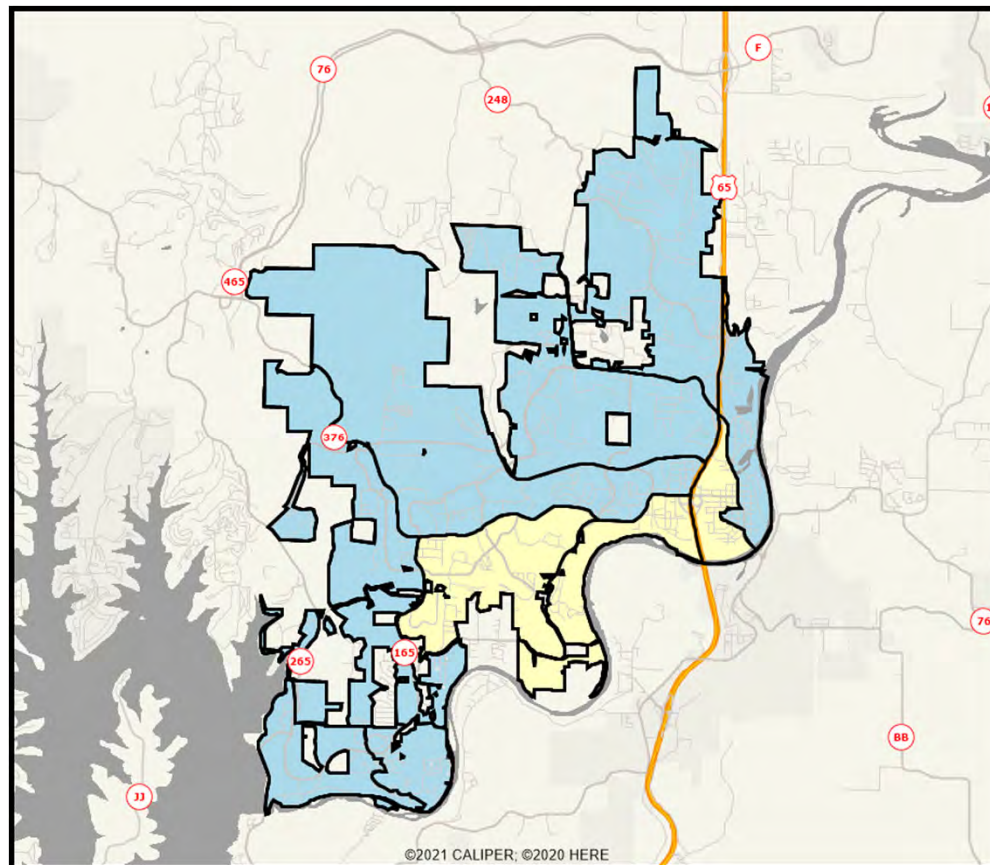
(Shading Reflects the Mean Rating by Census Block Group)



Branson
Community
Survey

Q15-1. Quality of code enforcement efforts

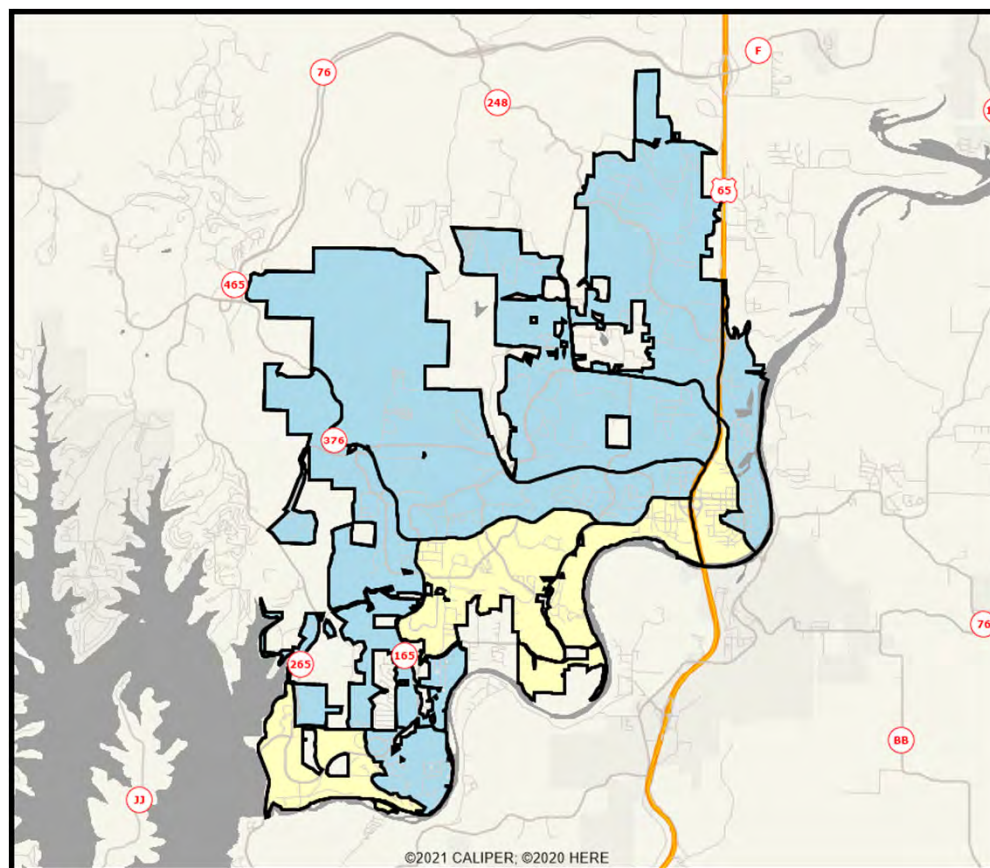
(Shading Reflects the Mean Rating by Census Block Group)



Branson
Community
Survey

Q15-2. Amount of code enforcement

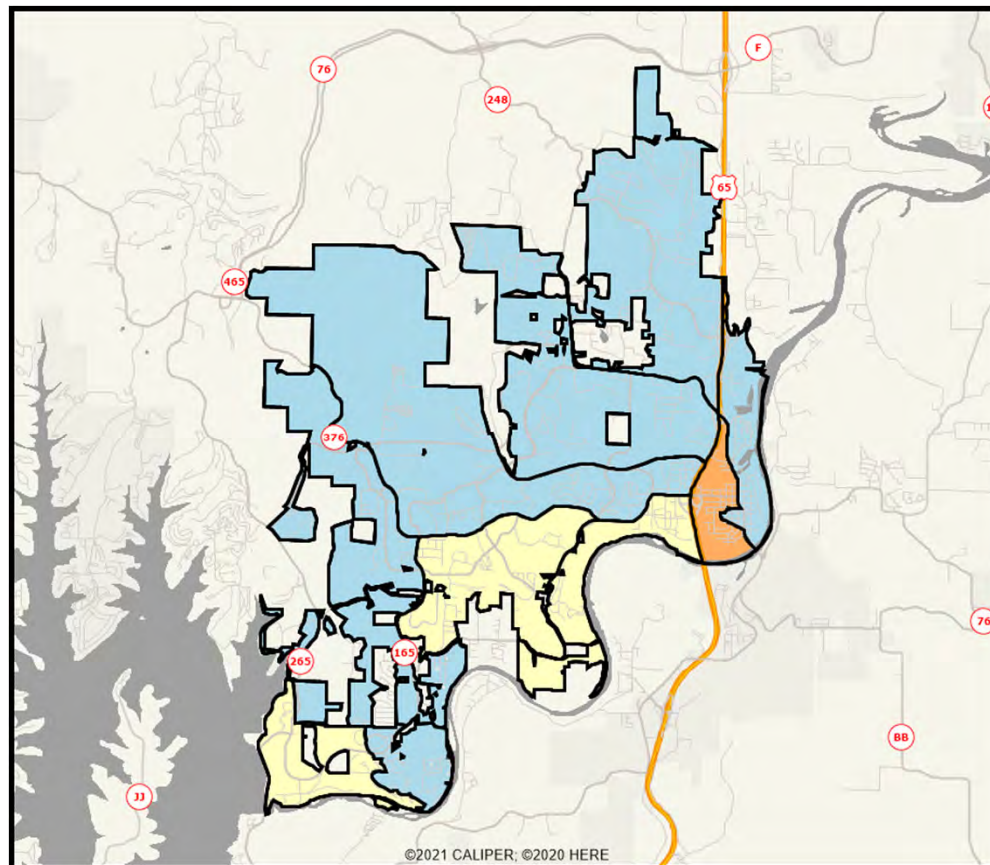
(Shading Reflects the Mean Rating by Census Block Group)



Branson
Community
Survey

Q15-3. Consistency of code enforcement

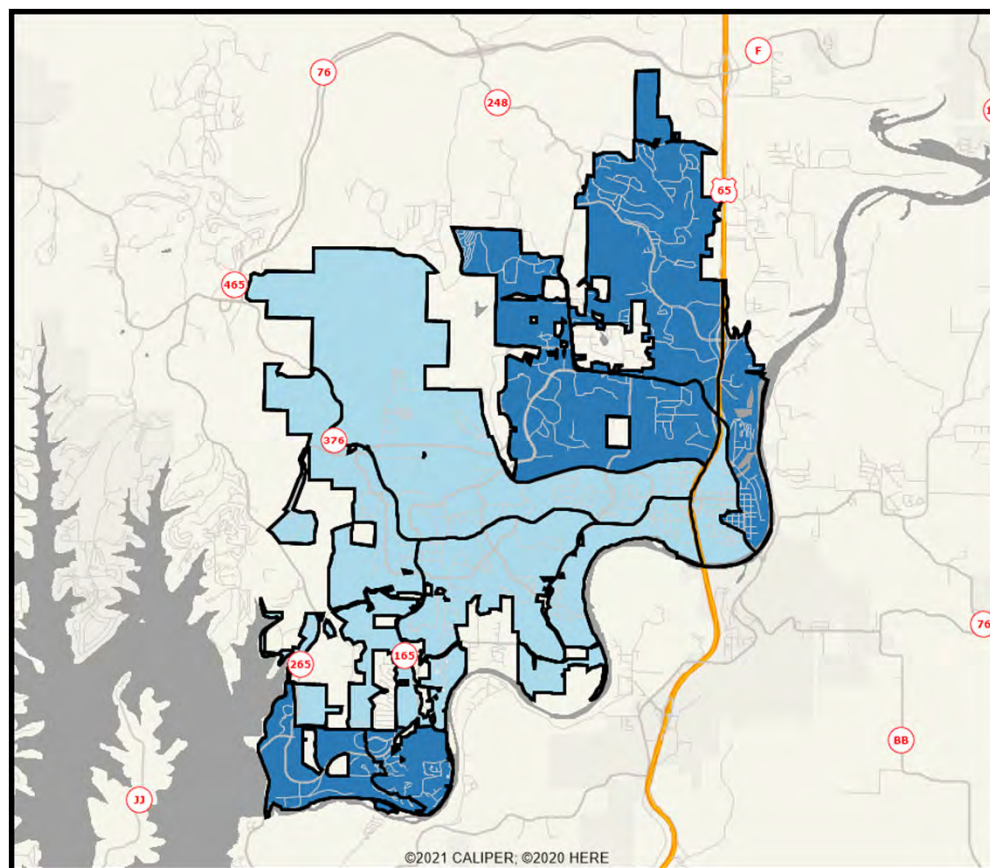
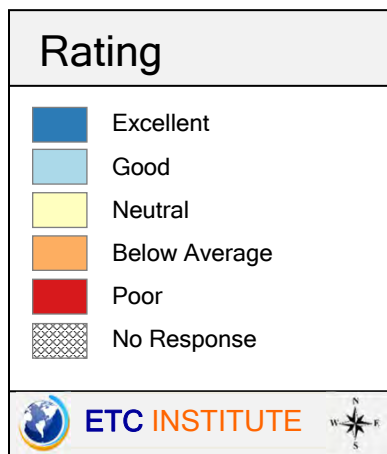
(Shading Reflects the Mean Rating by Census Block Group)



Branson
Community
Survey

Q21-1. As a place to live

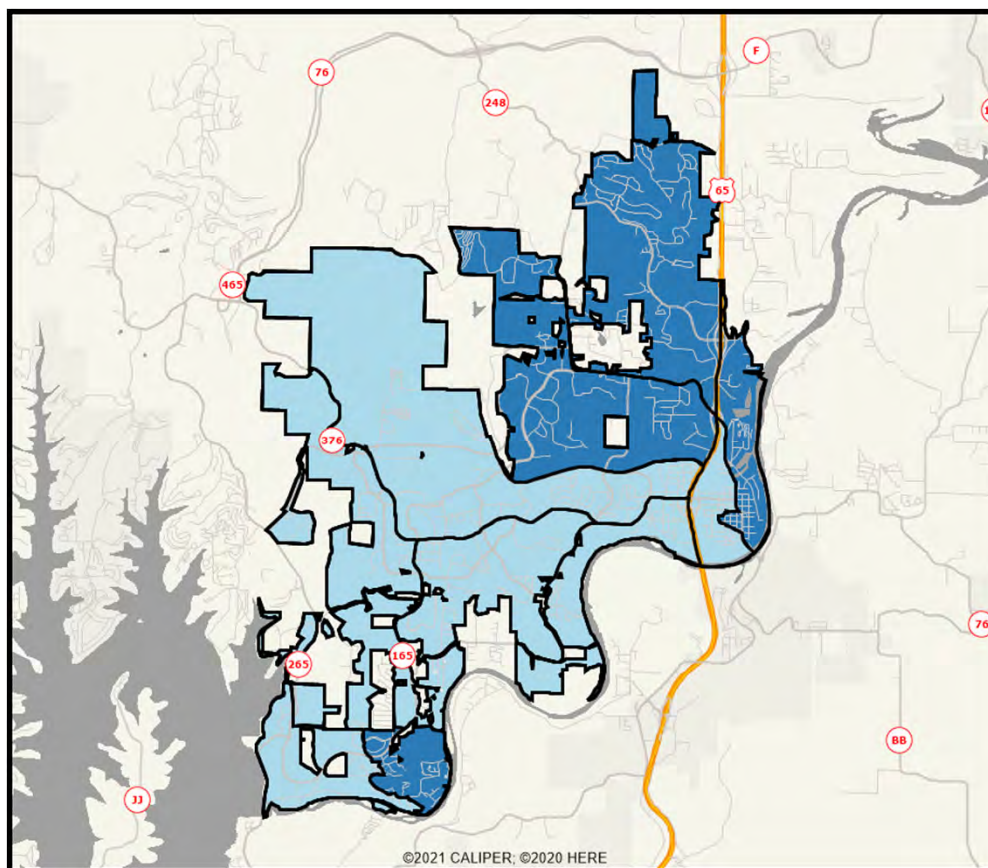
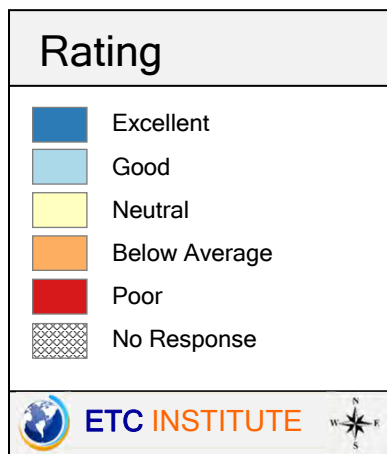
(Shading Reflects the Mean Rating by Census Block Group)



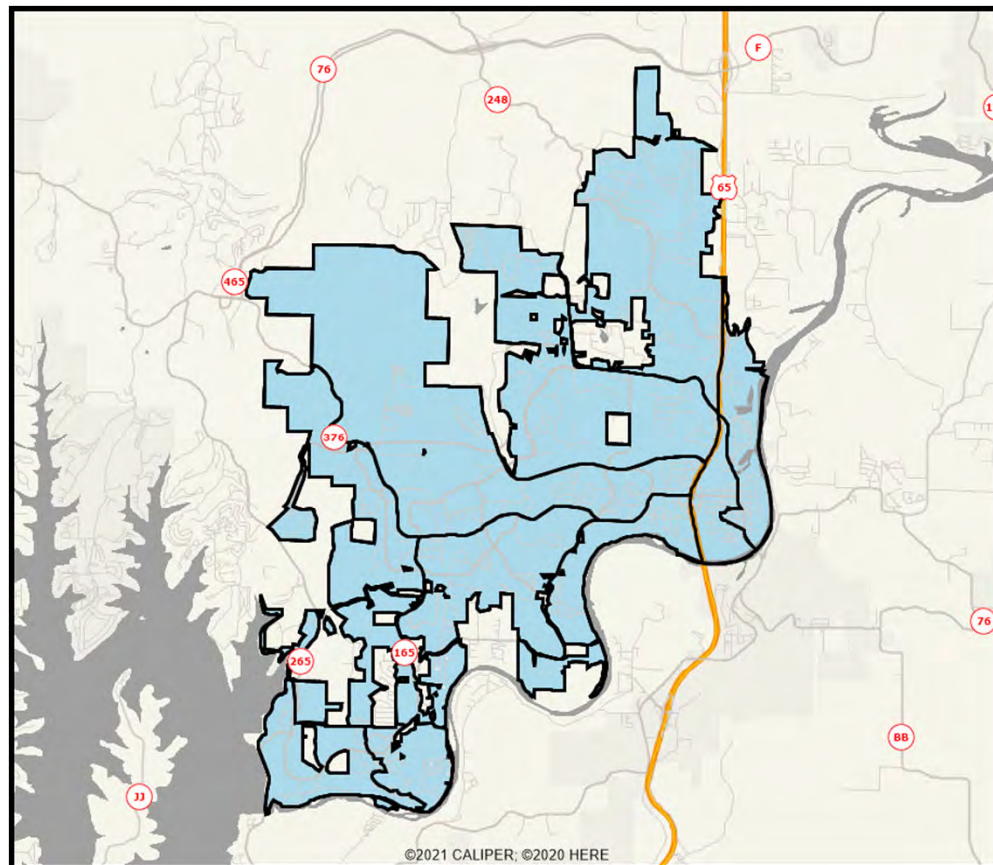
Branson
Community
Survey

Q21-2. As a place to raise a family

(Shading Reflects the Mean Rating by Census Block Group)



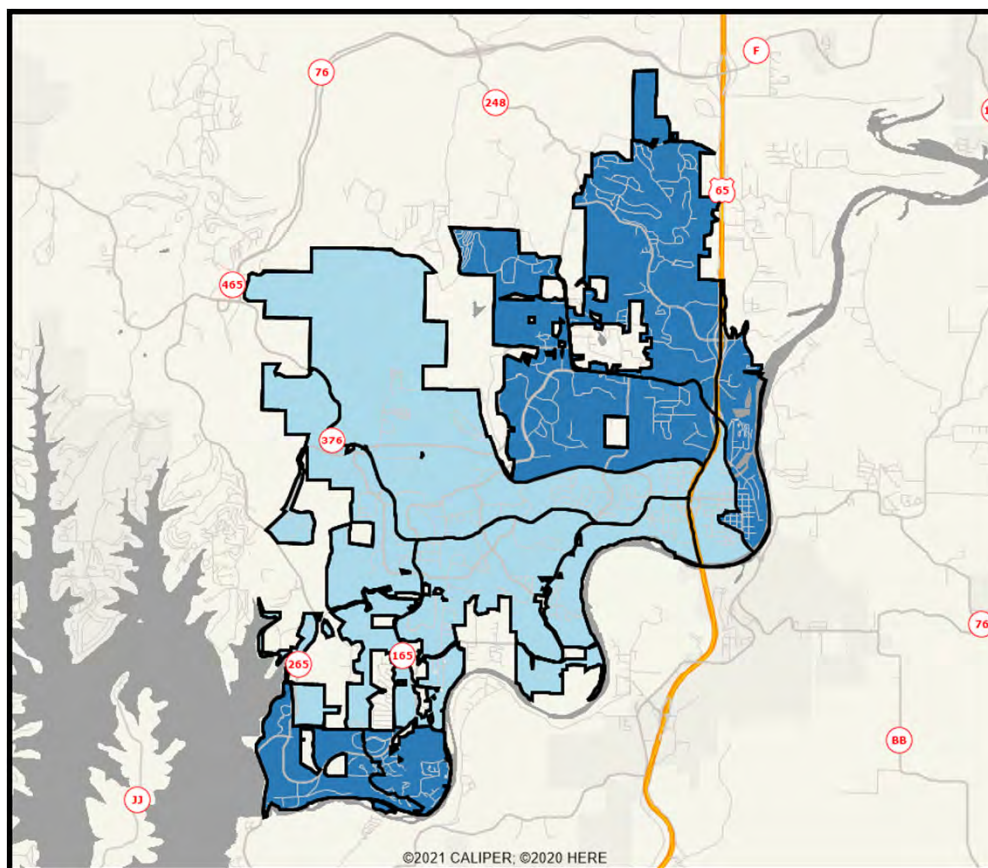
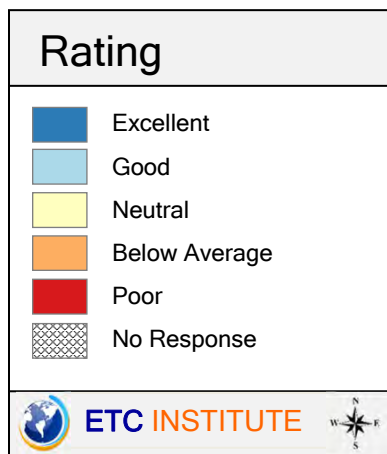
Branson
Community
Survey



Page 62

Q21-4. As a place to retire

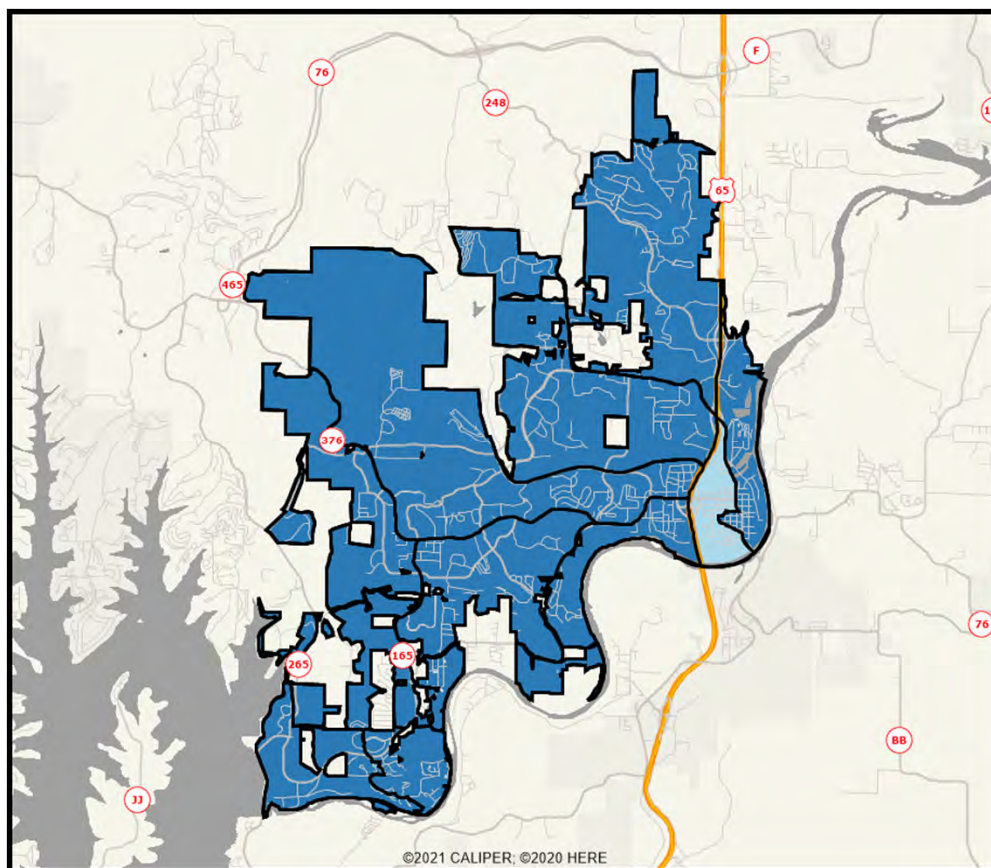
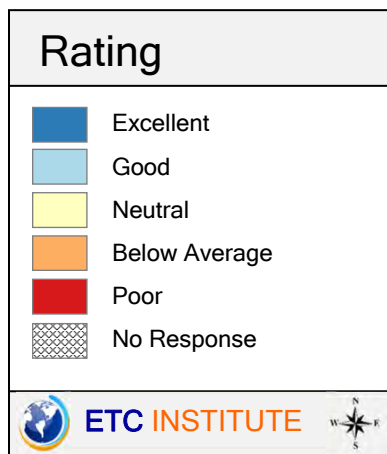
(Shading Reflects the Mean Rating by Census Block Group)



Branson
Community
Survey

Q21-5. As a place to visit

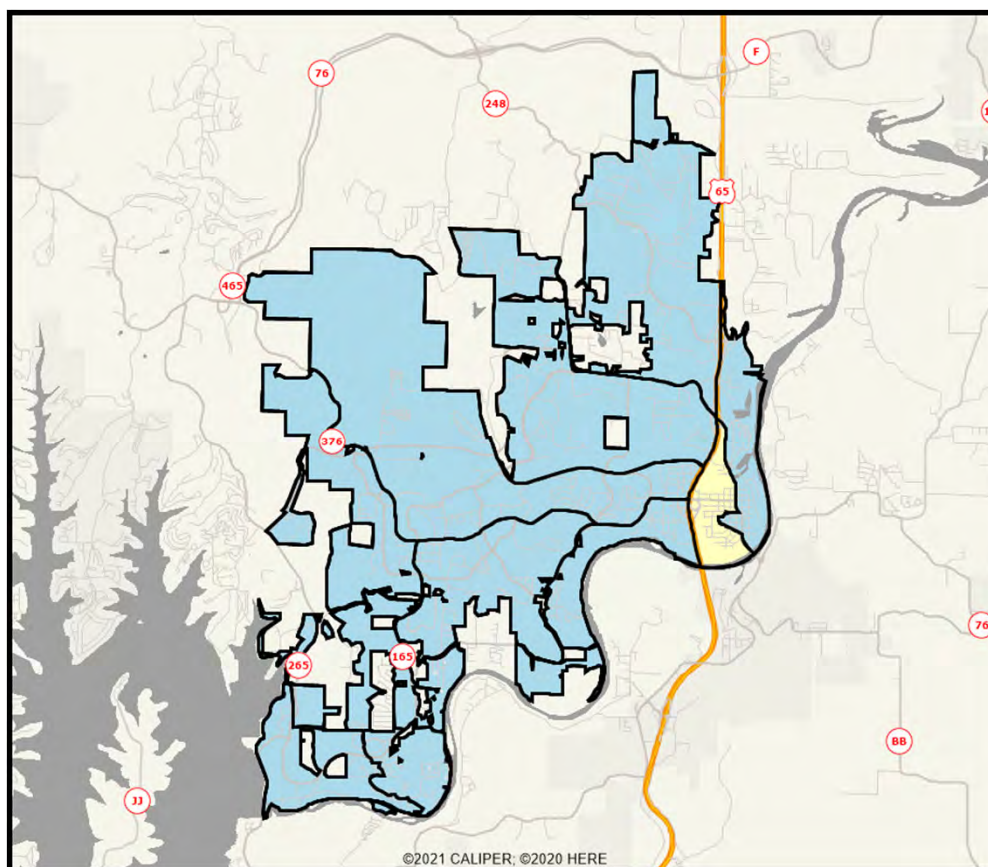
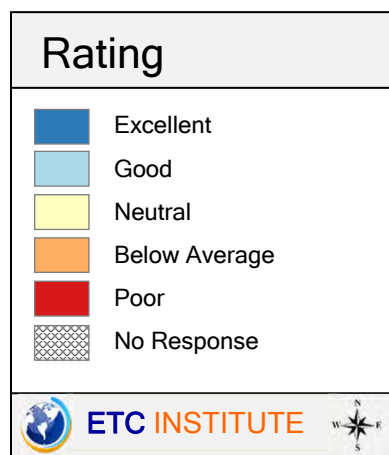
(Shading Reflects the Mean Rating by Census Block Group)



Branson
Community
Survey

Q21-6. As a City that is moving in a positive direction

(Shading Reflects the Mean Rating by Census Block Group)



Branson
Community
Survey